

# THE ASSOCIATION OF PROFESSIONAL LANDSCAPERS *SHOWCASE BROCHURE 2022*



The Association of  
**Professional  
Landscapers**  
*Awards 2022*

**LANDSCAPING EXCELLENCE**

Headline Sponsor

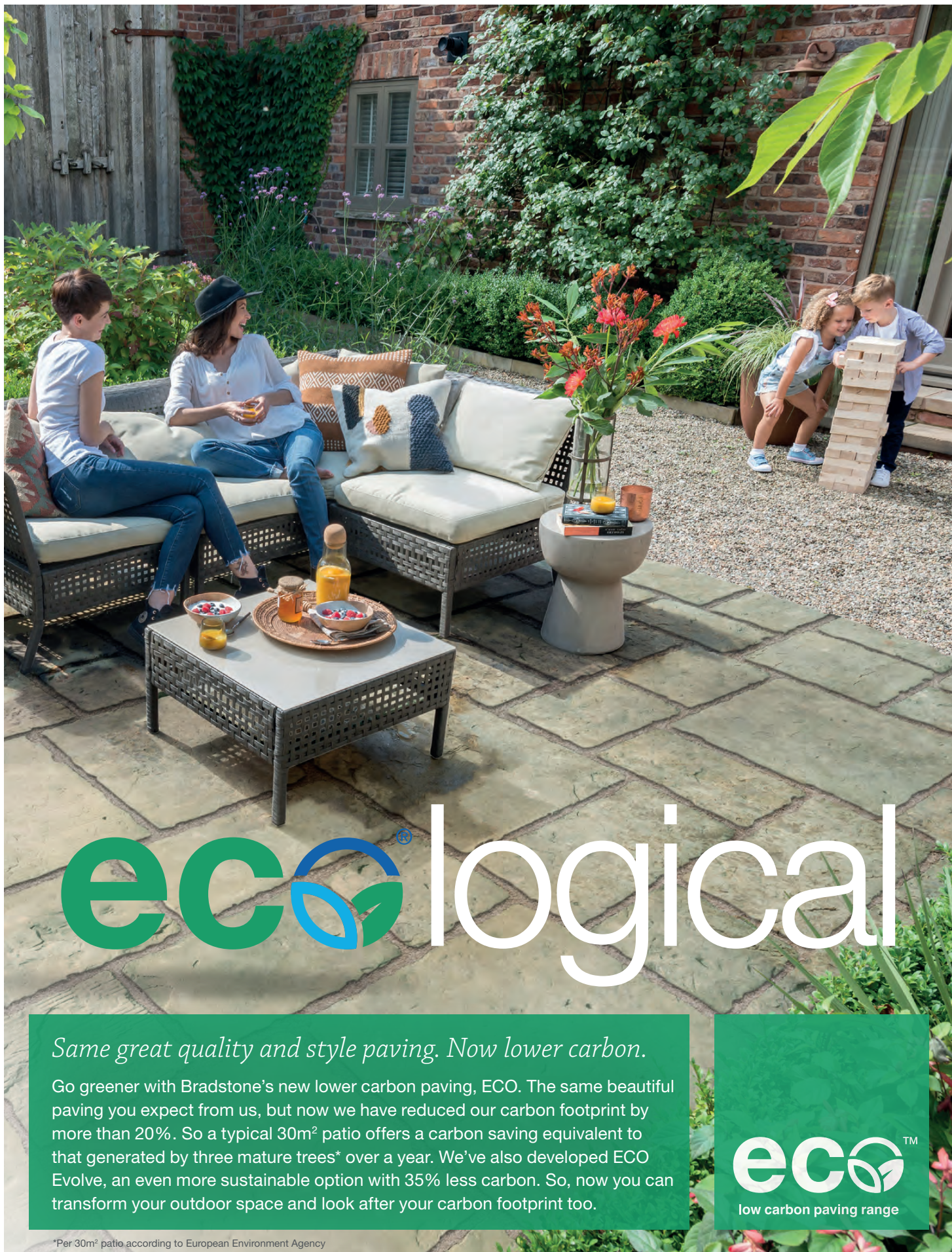
**BRADSTONE**



**TRUSTMARK**  
Government Endorsed Quality







# eco logical

*Same great quality and style paving. Now lower carbon.*

Go greener with Bradstone's new lower carbon paving, ECO. The same beautiful paving you expect from us, but now we have reduced our carbon footprint by more than 20%. So a typical 30m<sup>2</sup> patio offers a carbon saving equivalent to that generated by three mature trees\* over a year. We've also developed ECO Evolve, an even more sustainable option with 35% less carbon. So, now you can transform your outdoor space and look after your carbon footprint too.

\*Per 30m<sup>2</sup> patio according to European Environment Agency

**eco**™  
low carbon paving range

Find out more about ECO paving now

Call: **01335 372222**

Visit **bradstone.com**

**BRADSTONE®**





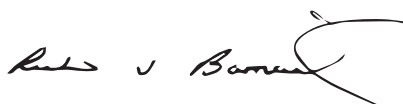
## Headline Sponsor **BRADSTONE**

As I pen this introduction just as the industry was embracing the resurgence of landscaping by the public a new strain of covid has cast an ugly shadow over working procedures challenging the supply of materials and labour recruitment.

The awards for 2022 have again attracted a bumper crop of entries and in many categories the schemes have exceeded the judges' expectations. It is welcome that this year we return to The Brewery as we all, not only feast on the awards themselves, but are able to socialise with our colleagues which was sadly missed last year.

Once again, my thanks go to the judges who, where possible have visited every scheme and collectively spent many hours deliberating on the results. Thanks also to our clients who have allowed contract work to proceed and our judges allowed entry to view the schemes.

These awards highlight what our industry is capable of in construction, planting schemes and maintenance. Let us all celebrate our truly inspiring industry.

**Richard J Barnard**  
APL Awards Chairman  
Chairman of APL Awards Judges



The Association of  
**Professional Landscapers**

*see page 55 for details about the  
APL Awards 2022*

## CATEGORIES

The Categories are as follows:

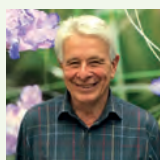
Page:

Supreme Winner	<b>4-5</b>
Project Value under £20,000	<b>6-8</b>
Project Value £20,000 - £35,000	<b>9-13</b>
Project Value £35,000 - £50,000	<b>15-18</b>
Project Value £50,000 - £65,000	<b>19-21</b>
Project Value £65,000 - £80,000	<b>22-23</b>
Project Value £80,000 - £100,000	<b>25-26</b>
Project Value £100,000 - £175,000	<b>27-29</b>
Project Value £175,000 - £250,000	<b>30-31</b>
Project Value over £250,000	<b>32-33</b>
Commercial Garden	<b>34-35</b>
APL Collaboration	<b>36</b>
Soft Landscaping	<b>37-38</b>
Hard Landscaping	<b>39-40</b>
Garden Feature	<b>41-43</b>
Overall Design & Build	<b>44-46</b>
Designer of the Year	<b>47-49</b>
Maintenance	<b>50-52</b>
Rising Star	<b>53</b>
Supplier of the Year	<b>54</b>
Company of the Year	<b>55</b>
Our Entrants	<b>56-59</b>

## THIS YEAR'S JUDGES



**Chairman  
Richard Barnard**  
*Hillier Landscapes*



**Bob Sweet**  
*Horticultural  
Director –  
River Street Events*



**Rupert Keys**  
*TASK (Training  
Academy for Skills  
and Knowledge)*



**Rod Winrow**  
*Garden House  
Design*



**Robin  
Templar-Williams**  
*Robin Williams  
and Associates*



**Phil Tremayne**  
*Association of  
Professional  
Landscapers*





Supreme Winner

Sponsored by

**BRADSTONE**







## SUPREME WINNER

Simply Green Landscapes Ltd & Andrea Newill Garden Design

**Project: Hermitage**

The existing outdoor space comprised of dated gardens as the house had been separate dwellings. Now one home, the new garden reflects this with obsolete walls, parking areas and enclosed spaces replaced with a unified garden suited to the client. An extensive sunken dining and entertaining terrace is located close to the house, with a barbeque area and space for a hot tub. A path leads beneath an oak pergola to the games room, wildflowers and a woodland garden, with water feature and bespoke bench. The design and naturalistic planting enhances views to the rural landscape

### Judges' Comments:

This garden showcases fantastic spacial design and planting, combined with superb implementation of the project. The 2 work seamlessly together and they are worthy winners.





Project Value Under £20,000



## BEST IN CATEGORY

Roger Gladwell Landscapes

**Project:** Courtyard Garden

**Project Manager:** Graham Pusey

**Designer:** Hannah Sheffield

Our clients here wanted to make a small space outside their kitchen a little more interesting and a place where his wife could rest in her twilight years.

They had a very contemporary style which we had to replicate in the build.

We built everything bespoke on site, the steel frame was fabricated and then sent off for powder coating to ensure there was no maintenance. Subtle lighting really sets the area off.

### Judges' Comments:

The frame shading around the courtyard created a perfect solution for the garden and it was all very well installed.





## BRONZE

LG Landscapes Limited

Project: Norris Road

Project Manager: Luke Griffin

Designer: Thomas Murphy

The client wanted a clean straight lined garden which could be used all year round bolstered, with some elegant planting drawing in the wildlife. A garden that looks good all year round from every angle without a massive budget. Thomas, the garden designer, created a design to meet the brief that looks and achieves everything the client asked for. They are really impressed with the result. I think the biggest challenge was getting a high end finish with low budget materials.

### Judges' Comments:

The project contains lovely detailing and was a competent scheme.



### Citation

# Let us help your business grow.

### With support in:

- SMAS Worksafe Certification
- Health & Safety compliance
- HR & Employment Law compliance
- ISO certification

0345 844 1111

[citation.co.uk/horticulture](https://citation.co.uk/horticulture)

**SPECIAL  
DISCOUNTS FOR  
MEMBERS\***



Fresh Horticultural  
**Careers**



## Staff available throughout London & the UK

Senior/Contracts Management  
Site Supervisors/Foreman  
Hard & Soft Landscaping  
Interior Landscaping  
Nursery/Garden Centre

Maintenance Gardeners  
Horticulture Sales  
Skilled Tradespeople  
Amenity Horticulture  
General Labourers & more....

CONTACT US TODAY  
**020 7793 7825**

VIEW JOBS & CANDIDATES ONLINE  
**[freshhortcareers.com](https://freshhortcareers.com)**





Project Value £20,000 - 35,000



## BEST IN CATEGORY

Langdale Landscapes Ltd

Project: Kings Avenue

Project Manager: Nik Edser

Designer: Rachel Reynolds

Sponsored by

**Citation**

The client wanted a contemporary garden with good screening and lush planting. It was a small space and they were very specific on the detail so the design had to incorporate a lounge area, a dining area and an area by the house that brought the outside indoors when the doors were open. Rachel designed a lovely scheme that really embraced all of the requirements and created a beautiful space. The project took 3 weeks to build and was made more tricky due to the access which was up a flight of steps to a communal alley along the back of the houses.

Given the size of the garden I was delighted with the outcome and it really is a lovely space that I still can't believe fitted in to the small garden that we started with!

The clients are absolutely delighted with it and we have been back a few times to photograph it as it matures.

### Judges' Comments:

With very poor access to do the build they made excellent use of a small space, very good paving and finishing. A beautiful space to be in, and an extremely clean finish.







## GOLD

Acacia Gardens Ltd

**Project:** Contemporary Garden, Hammersmith

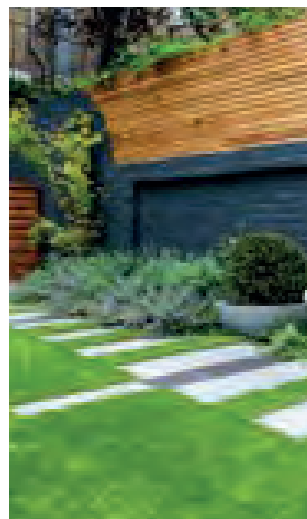
**Project Manager:** Gentian Sinanaj

**Designer:** Tom Howard

Client made some changes, such as position of the shed. Also we had to do a complete planting plan. Garden was a empty unused space and we completely transformed it as per design, including porcelain patio, long stepping stones using clay pavers and porcelain, cladding, slated trellis, painting the walls, shed, planting, irrigation and other details such as pots, furniture, lighting.

### Judges Comments:

The transformation of the garden has been delivered to a high standard and achieves the objective of the scheme. The finished result is attractive and suitable for the young family to use as their only outdoor space.



## SILVER MERIT

Goldenstones

**Project:** Cirencester

**Project Manager:** Chris Blackwell

Goldenstones were recommended into this project, the kids were no longer needing the lawn for football, they are now teenagers & required somewhere to hang out also providing a family eating area along with evening entertaining.

I had noticed a busy road behind the wall, a suggestion of a water feature to give some white noise to disguise the traffic noise was added into the plan.

A bespoke gazebo with floating batten bench became the main entertaining area with a light sandstone slab & rendered wall

A darker sandstone circle was then created to accommodate the round garden furniture set along with the blade waterfall in the matching sandstone.

A porcelain kitchen worksurface was installed to accommodate an external fridge. Remote control garden lighting, including hidden wires throughout the gazebo provided a tranquil and calm area to enjoy the evenings.

### Judges' Comments:

This met clients brief very well and the quality of the build was excellent.



## SILVER MERIT

Green Bear Landscaping Ltd

**Project:** Bristol Water Towers Shadow

**Project Manager:** James Bromley

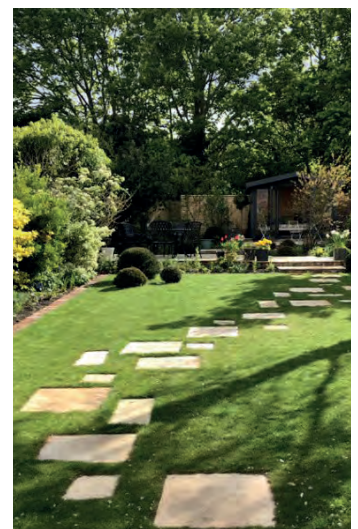
**Designer:** Kate Savill

Jean approached us in mid 2020 with a design completed by Kate Savill Landscapes. Having just completed another project for Kate we were keen to get onboard and came highly recommended. Jean had a very overgrown outdoor space although wild was much loved.

We built from a design a beautiful edged lawn and raised patio areas to create depths of levels and define the planting beds, the plan included new fencing, screening, power to summerhouse location and a lawn. We moved over 100 Tonnes on this Job but the end result is magical.

### Judges' Comments:

A very tidy project, finished to a very high standard and the planting was lovely. A very pleasant garden.







Project Value £20,000 - £35,000



## SILVER MERIT

Green Bear Landscaping Ltd

Project: A garden for Shaun

Project Manager: James Bromley

Designer: Kate Savill

Martin approached us after having a very sad Shaun the sheep living in their summerhouse. Martin wanted to create a safe space to give Shaun pride of place within his new garden. We put Martin in touch with Kate Savill a local award-winning designer in Bristol. Kate designed the new space around Shaun. Built by Green Bear the garden features a bespoke shed with extending pergola, new paving around the summer house, and beautiful oval shapes to create a lawn and entertaining areas. We completed the project in March of 2020. Martin and Shaun are overjoyed with there new space.

### Judges' Comments:

An impressive finish to the garden, the quality of the paving work is excellent.

## SILVER MERIT

The Botanical Gardener

Project: Howards Lane

Project Manager: Toby Bull

Designer: Clara Guedes

Create a very contemporary, low maintenance garden that incorporates the existing Olive tree. We design a very contemporary bespoke fence and gate using 68mm Iroko battens and a gently curving Dutch clay paver path to the front door. We incorporated a secondary gravel path for access to the side of the house. A challenge we had was tying in levels with the existing Olive tree. The project took approx. 4 weeks and was relatively straightforward in that it was a front garden with good access. We were very happy with the outcome and delighted with the finish of the fences. The client was delighted with the quality of the finish.

### Judges' Comments:

This was a lovely transformation of a front garden that lit up the street. The Hardwood fence and gates were all fabricated on site and done very well. They are an outstanding feature for the property.



## SILVER MERIT

The Botanical Gardener

Project: Stratford Grove

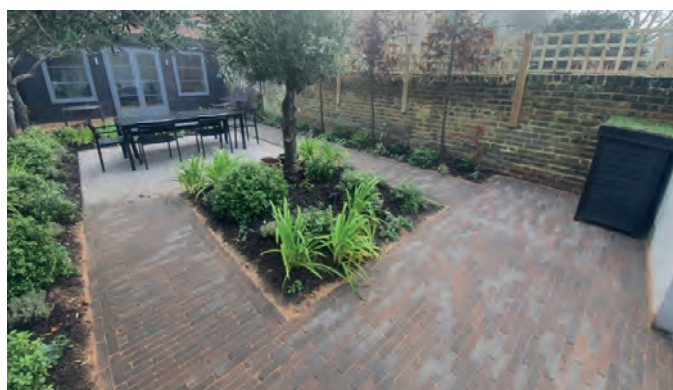
Project Manager: Toby Bull

Designer: Clara Guedes

To create a garden that links the house with the new summer house to the back of the garden and creating a seating area for outdoor dining and a small seating area off the summerhouse. The design should not reveal the full view of the summerhouse from the house. Through planting we helped to screen the view through to the summer house and create a discrete dining area. The use of a dutch clay paver path to link the house to the summerhouse. The challenge on this project was the access was through the house and supplier lead times due to covid. The project took 5 weeks to complete. It was a small garden and very tight for space but we were very happy with the outcome, likewise for the client.

### Judges' Comments:

A charming little courtyard and they created a transformative space for the client. A lot of thought and care went into this job.





## SILVER

Acacia Gardens Ltd

**Project:** Heath Drive

**Project Manager:** Gentian Sinanaj

**Designer:** Bob Richmond Watson

To transform their garden into a dynamic, nature friendly space that enticed you into it and provided spaces for relaxation and entertaining.

The aim was to improve the visual impact of the front garden, all new hard landscaping and fencing throughout and a nature friendly low maintenance focus to the planting.

They wanted different areas from which to enjoy the morning and evening sun. Enhancing the views from the house were a key element to the brief as was a water feature that gave a gentle burble.

A small raised bed for salad growing, a low level storage solution that could double as a serving counter on their dining terrace and lighting of the space were also requested.

### Judges' Comments:

The landscaping has been carried out to a competent level, the planting includes some specimen trees and overall makes for a pleasant garden.



## SILVER

Shrub and Stone

**Project:** Cranleigh Gardens

**Project Manager:** Glen Collins

**Designer:** Lawrence Roberts

Our clients usually travel abroad 6 times a year. With the pandemic and with no immediate prospects of travelling, having lived in the same house for many years they decided to invest their travel budget into a new garden. They wanted this designed, based upon their remit which was to recycle and re-use as many plants and paving blocks as possible. Disguise a concrete fence line. Provide an area to plant and grown fruit and vegetables. Incorporate a water feature, an area to show off some of Michael's glasswork, whilst providing a low maintenance garden, for when they can travel again.

### Judges' Comments:

The raised beds have been constructed well, paving is laid to a high quality. A lovely garden to be in.

## BRONZE

DBM Landscapes

**Project:** Thatch End

**Project Manager:** Brad White

**Designer:** Brad White

An outdoor entertaining area to be constructed in a contemporary theme to include a bbq and fridge. Due to starting this project in March/April 2020 during the Covid lockdown. I completed all works on my own which proved incredibly challenging. It took longer than usual to complete due to this and limitations on materials. The client was overjoyed with the final look.

### Judges' Comments:

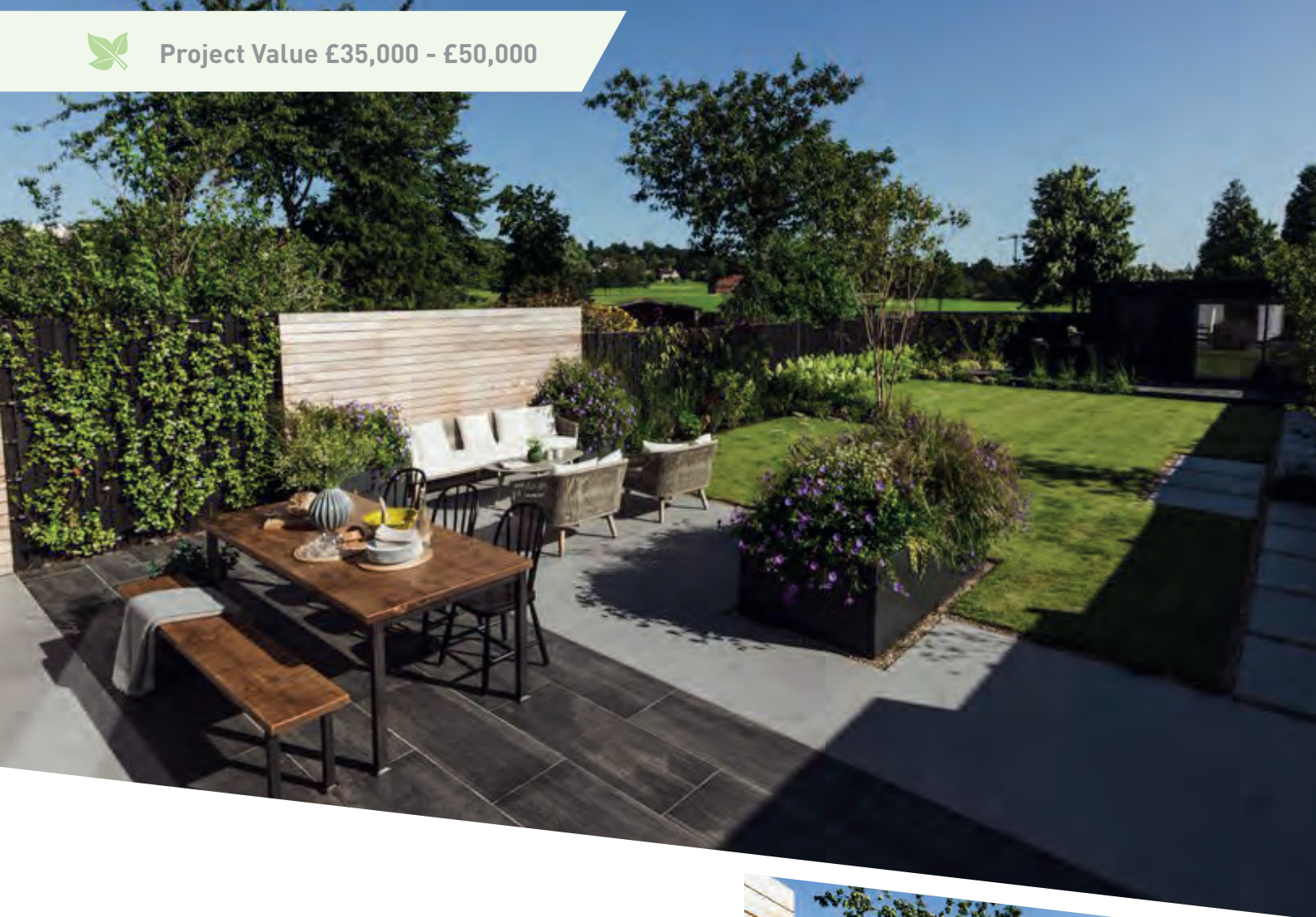
There was a lot of work included in this project and they were carried out competently. The paving was a solid bit of work.







Project Value £35,000 - £50,000



## BEST IN CATEGORY

Nordland Landscapes

Project: Whitmore Road

Project Manager: Daniel O'Neill

Designer: Georgia Lyndsay

A modern suburban garden set to the famous backdrop of Harrow on the Hill.

### Judges' Comments:

Considering the access and the extent of the work, this is a very competent scheme which has been delivered to perfection. Whilst a relatively simple scheme, there is much attention to detail.

Sponsored by

**arborforest**  
Products Ltd







## SILVER MERIT

M. Withall Landscapes

**Project:** Once 'A-Pond' A Time

**Project Manager:** Michael Withall

**Designer:** Michael Withall

A garden design and build project we undertook with the main focus being around the immediate patio area and feature pond. The client had parents moving in with them so a low maintenance and easily accessible garden was required.

A must was to relocate the sunken koi pond from the centre of the existing garden and move it to the rear end of the proposed garden. A combination of Natural Stone and man-made material were combined to give continuation of the black and grey theme throughout. A new lawn and planting design brought colour and life to the harder construction. Working around builders who were conducting a rear extension we spent around 8 weeks on the project spread over a span of 3 months. We particularly enjoyed the construction of the pond - our first one, as it was required to be both a habitat and a water feature.

### Judges' Comments:

A good transformation which met the clients brief exactly. The path up the side of the garden is executed excellently.

## SILVER

Cowen Landscapes

**Project:** Bearstead

**Project Manager/Designer:** Matt Harvey

Situated on a hill overlooking the picturesque Kent village of Bearsted, this garden was completely unusable; there were no level areas for the family to use. The brief was to level off the garden and erect fencing around the perimeter in order to provide the family a private oasis so they could enjoy their outdoor space whilst keeping the views of the village below.

The biggest challenge to construction was that we had no kerbside delivery available to us; every block, bag, plant and roll of turf had to be brought up on the back of our little tipper.

The lower retaining wall, constructed of hollow concrete blocks, was integral to the finished garden as it allowed us to completely level the site. All soil from the top of the garden was re-used in backfill to bring up the levels on the lower part of the garden, doubling the usable space available to the client. "We have a garden now" was a term used throughout the build.

### Judges' Comments:

This is a massive transformation and is really what landscaping at this level is all about. The client requested a garden they can enjoy and sit out in and also the kids could play in. This does deliver.



## SILVER

Goldenstones Gardening

**Project:** Hillcrest

**Project Designer:** Chris Blackwell

Goldenstones were invited to tender for this project, part of the process requires a visit to a current project. Upon attending a garden we were just finishing, we had confirmation that we won the tender and the deposit would be paid immediately. The site visit created much more work than the original tender with added paving sections. The general plan was a paved natural sandstone area against the house with curving edges to match sweeping raised stone beds all finished and capped in local stone. Some texture was given with a couple of loose decorative stone areas with grasses and stepping stones. The existing summerhouse became a centre piece with sandstone circles, one of which was bordered with beds faced with Cotswold stone. A circular stone water feature was created to accommodate a recently purchased bronze heron and the grand children's goldfish. Finally, trees & lighting were added.

### Judges' Comments:

Low maintenance project was achieved and suited what the client had asked for in the brief.



## SILVER

Greenscape Landscaping/ Arboriculture

Project: Glass/ Slate & Steel

Project Manager/Designer: John Paver

After purchasing a Victorian glass house from Hartley botanic and a Corten steel fire pit, my client contracted us to install the base for the glasshouse and to create a sympathetic design around the building. We had to match in with their property and their existing planting scheme, to include a seating area which incorporated the fire pit. Siting the glass house correctly was our top priority and maintaining parallel alignment to the property. (The glasshouse base had to be built following Hartley's strict plan with a 4mm tolerance which we delivered to within a 2mm spec) I then introduced welsh slate as a third key element, initially using it as the coping stone for the fire pit seating, all the templates for which were handmade by myself.

### Judges' Comments:

The garden is aesthetically very pleasant and attractive. It has a number of different elements which have all been tastefully achieved. The levels and configuration of the garden has been well thought through to produce a really pleasing result.



## SILVER

G-Scapes of Lichfield Ltd

Project: Countryside Escape

Project Manager: Daniel and Robert Gee

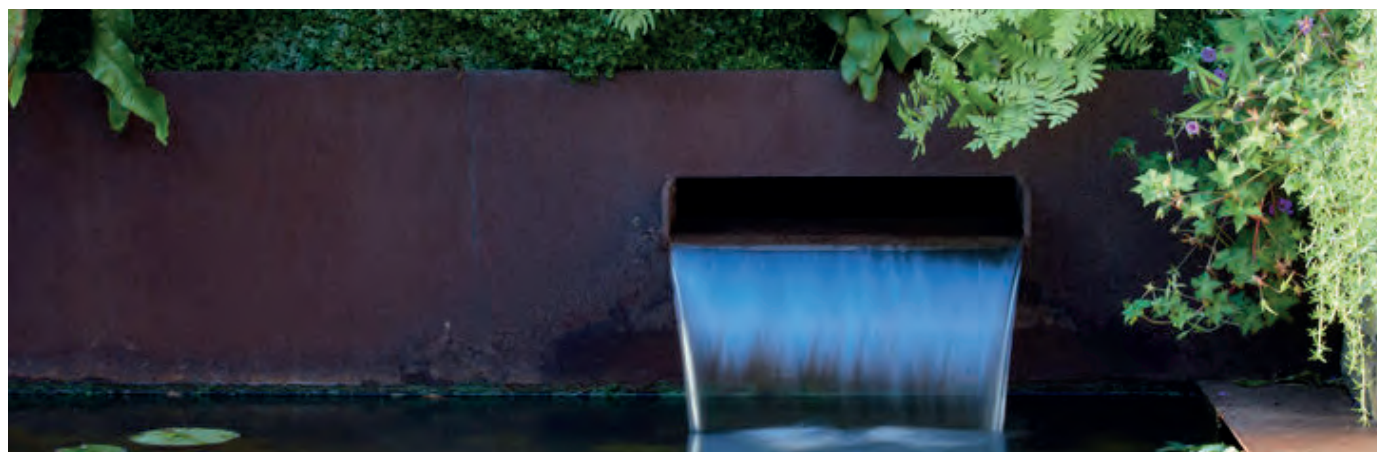
Designer: Daniel Gee

Photographer: Chris Day

The client brief was to create an Inside/Outer garden with a seamless transition from the recently constructed large oak and glass garden room to a wrap around entertaining space. Located in a remote rural location, the preservation of the stunning countryside views was of paramount importance. The patio is constructed of white porcelain tiles identical to those used in the garden room, and oak planting beds and raised seating areas mirror the oak framework of the new build. A fully equipped kitchen and BBQ area is backed by privacy screening.

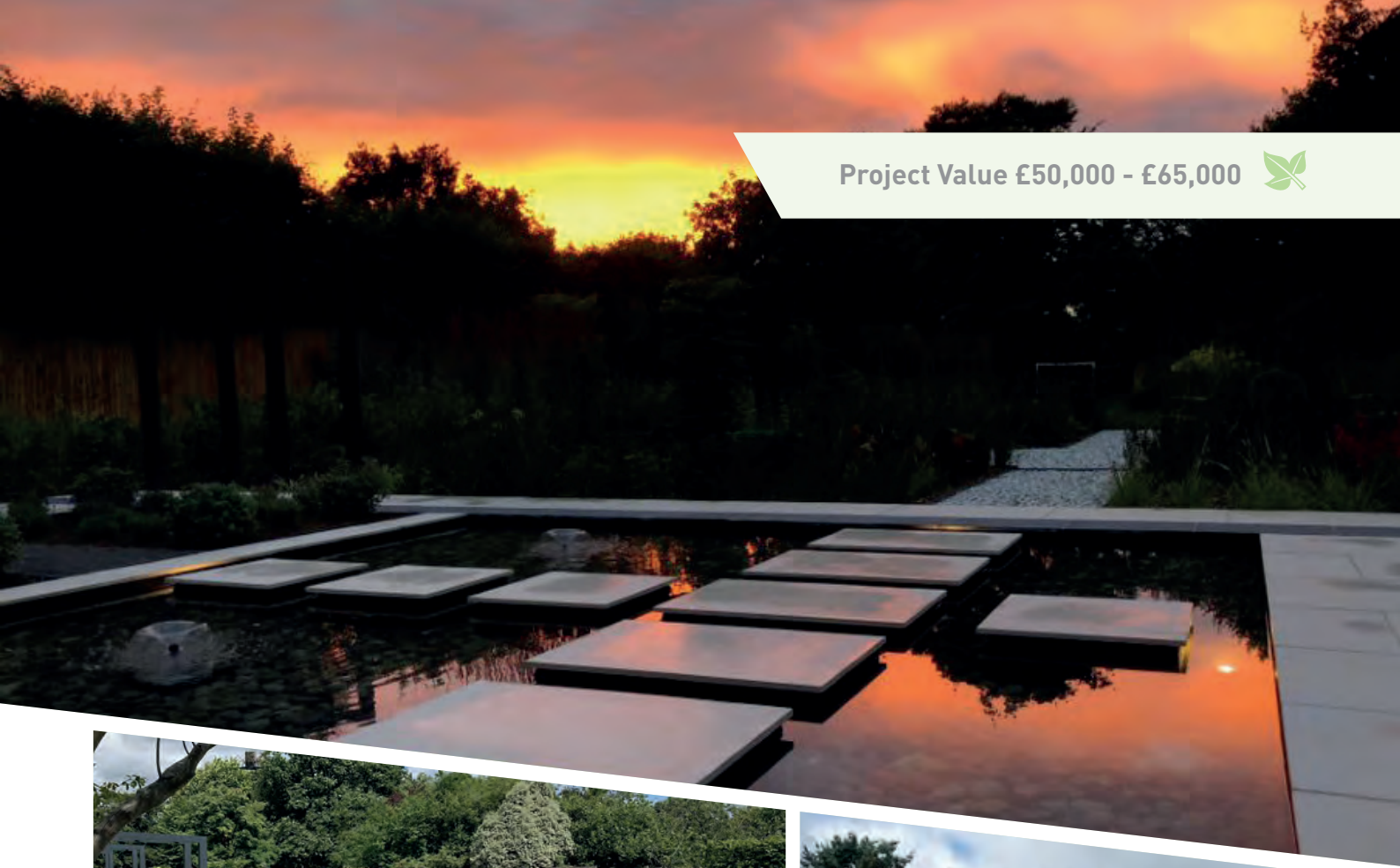
### Judges' Comments:

A lovely project in a beautiful setting. The Oak sleeper raised beds had been built to a high standard. A well finished job.





Project Value £50,000 - £65,000



## BEST IN CATEGORY

Bowood Landscapes Ltd

Project: Copse Mead

Project Manager: Andy Woodason

Designer: Caroline Butler

Mr Little wanted a contemporary garden to include a formal pond with bold areas of repeat planting. He wanted paving used in a clean contemporary way and provide a level threshold into the house. Paths to provide access through the garden that also offer views through to the rear garden. Ultimately to make the most of the view out of the new large sliding doors. The main challenge (not including the initial covid lockdown) was to construct the porcelain stepping-stones through the pond. This was achieved with careful planning and the result is excellent with the customer being absolutely delighted.

### Judges' Comments:

A beautifully delivered project, with challenges such as levelling the pool and the stones surrounding it. The planting is sympathetic and it feels like a very comfortable space to be in.

Sponsored by

**BBC**  
**Gardeners'**  
**World**Events





**Project Value £50,000-£65,000**

## GOLD

Habitat Landscapes Ltd

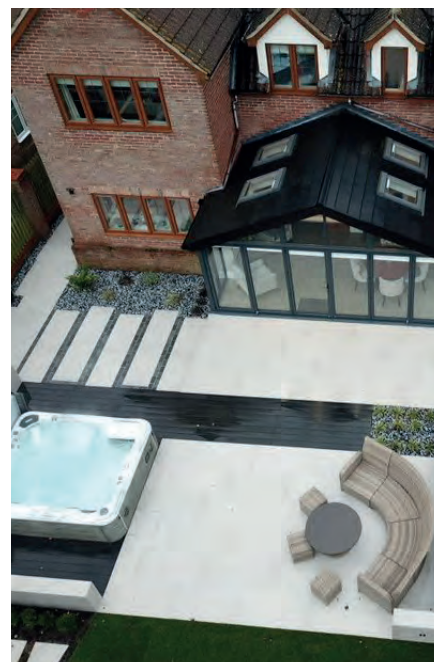
**Project: Black and White**      **Project Manager; Thomas Hole**

**Designer: Sue Gilbert**

With a recently refurbished property the client wished to update the external spaces to reflect the contemporary style of the interior. Requiring a large entertaining space with some bold statements to merge with a traditional lawn and border area moving through the scheme. Using black and white as the main material colours for the space a linear design was created by Sue Gilbert to give the modern feel required. A hot tub and decked area with surrounding walls and trellis adjacent to a large patio space bordered with low walls were constructed along with planting pockets within the area. Additional planting added to the large, already established scheme and a new lawn shape created to bring some soft curves and new colours to the rear section of the garden. The main impact of this build being the simplicity of the contrasting materials blending beautifully into the overall indoor and outdoor spaces.

### Judges' Comments:

Everything was carried out excellently, with extra ingenuity concerning the hot tub lid handle. It has all the elements of a fantastic entertaining space.



## GOLD

Landscapia Ltd

**Project: Modern Edwardian**

**Project Manager; Leigh Lane**

**Designer; Marc Lane**

This garden had no interest apart from a couple of well established silver birch trees. Our client asked us for inspiration and gave us complete free-reign to design something that offered extra seating for entertaining. We focused on the centre of the garden where the sun was present most of the day. The sunken seating area and floating seats add more interest and we also fitted a louvered roof pergola so the area can be used come rain or shine. Additional features include speakers, heating, lighting, a fire bowl and even wifi. The client is delighted with the results.

### Judges' Comments:

A tidy and very clean project, every aspect has been constructed excellently and to a high standard.

## GOLD

Roger Gladwell Landscapes

**Project: Glevering Mill**

**Project Manager; Graham Pusey**

**Designer; Camilla Jousiffe**

Our clients here realised the need to have a good usable outside space when they retired. We had to build the wall around the outside to waterproof the area as the garden did have an occasional flood because of the proximity to the river. Within the garden there is a submersible pump under the terrace just in case this ever happens again. The pump is controlled by a switch from inside the house. There is sufficient space outside to have dining under the Oak building as well as sitting outside should they wish.

### Judges' Comments:

The combination of red brick and sandstone has been done wonderfully in a beautiful setting. The paving is well laid and the brick slip band through the centre of the patio is a lovely detail. The entrance path with the patterned area is also great.







## BRONZE

Goldenstones Gardening

Project: Ashmead

Project Manager: Chris Blackwell

Goldenstones initially quoted for a patio which we installed. Whilst installing the patio the customer asked about my vision for the remainder of the garden. He wanted a pond so I said we best have a bridge over it for the grand kids to watch the pond life, he was sold. Drawings were completed and we ended up with a well that would overflow and run into a large pond. We would have pathways leading around the garden dividing the different sections to enjoy views from the different locations with Cotswold stone benches and a Oak upright screen to mask a composting area. More Cotswold stone was added to smarten the entrance, 100's of plants were added including a large wildflower meadow. The project was finished with a new bin store and shelter for the air source heat pumps.

### Judges' Comments:

The project has been delivered to the satisfaction of the client, with good stonework and timber construction. A nice garden to be in.

## BRONZE

Goldenstones Gardening

Project: Tickmorend

Project Manager: Chris Blackwell

Goldenstones were tasked with the addition of a new electric entrance sliding gate, stone pillars & Cotswold stone walls linking back to the boundary for a large Air BNB. A large hogging driveway was added before changing the layout of the entrance pathways, building a new stone archway with gates, patio, polished concrete worksurface including pizza oven and BBQ. The property already had a pond, working alongside another firm the pond was dug out further to create a large natural pond. We then decked and dressed the pool and newly installed hot tub with rough sawn larch to create a large deck for guests.

### Judges' Comments:

The walling is well executed and a lovely entrance to the property, the outdoor kitchen is a great aspect to the space.



TASK provides a broad range of landscaping and land based courses for horticultural businesses and individuals.

Centrally located in the heart of England, TASK provides the ideal environment for students to learn practical skills training, taught in small groups by industry experts.

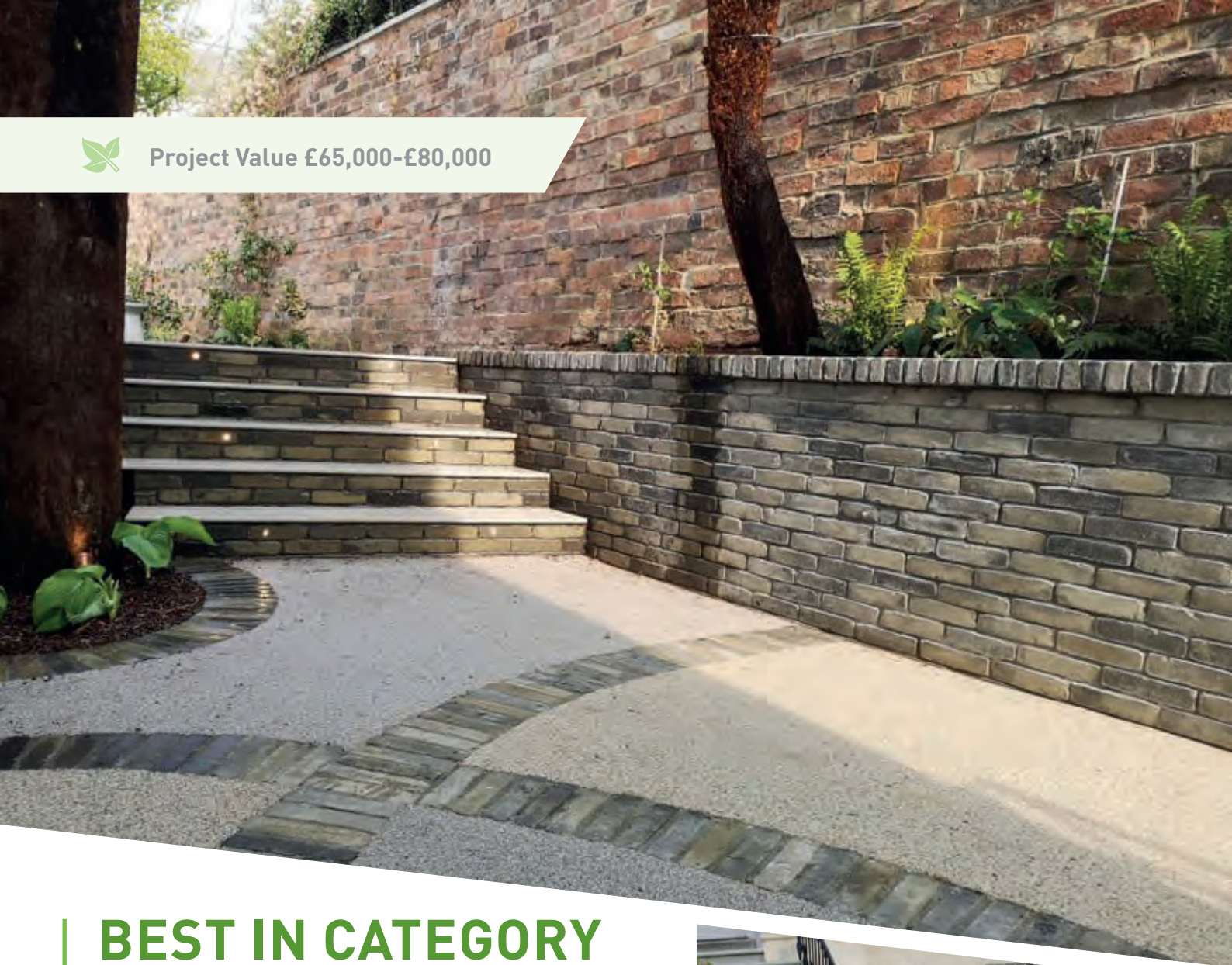


Speak to a member of our team at:  
 ✉ hello@taskacademy.co.uk ☎ 01386 462790 🌐 www.taskacademy.co.uk





Project Value £65,000-£80,000



## BEST IN CATEGORY

Emotive Landscapes

Project: Cheltenham Town Garden

Project Manager: Guy Jones

Design and build the gardens to link the basement, 1st floor and existing garden. Create an artistic space without grass which worked with the pressures of being used by a dog in a small space (resin bound solution). Design to match the house; stylish without trying too hard. Build the garden in two phases. Phase one: Execute the back garden before before the garage extension which would block access to the rear. Phase 2: Design and build the driveway and front 'garden' which had to interface with the new garage now at basement level without restricting and vehicular access.

### Judges' Comments:

This is a stunning garden, both back and front of the house. There is some exceptional hard landscaping accompanied by a daring palette of unusual plants.

Sponsored by







## SILVER MERIT

The Botanical Gardener

**Project:** Lebanon Park

**Project Manager:** Chris Warren

**Designer:** Andy Sturgeon

The client requested a space where they could relax in the evening to enjoy a glass of wine on rocking chairs, in surroundings that reminded him of where he grew up in Africa. The new section of the garden, which was land purchased behind their existing garden, should transition nicely from the existing garden into the new and give a rustic and exotic feel. The materials used were reclaimed or gave a feeling of reclaimed giving that rustic feel. The garden required a large excavation and access was limited and the challenge was to tie in the levels between the existing garden and the new section of land, whilst working around a large existing oak tree. The project took 12 weeks to complete, and took longer to complete than expected due to a larger excavation than anticipated and the detail in the stone wall water feature. We were delighted with the outcome and the client was very happy and felt the outcome met their brief.

### Judges' Comments:

The garden has been designed with a hint at the African landscape at the client's request. It is both appealing and provides an aesthetically pleasing solution for the clients. It will have all year-round interest, and a relaxing space.

## SILVER MERIT

Gardenscapes

**Project:** Blanks Farm

**Project Manager:** Neal Markwick and Ainsley Courten

**Designer:** Chris Beardshore and Kate Hillock

Our client in Newdigate, Surrey approached us to create their front garden to complement the rest of the garden space. The brief was to implement their design using products to enhance the natural environment, making the driveway and paths more accessible for wheelchairs. Initially we found the area mainly laid to lawn with steps. The existing configuration was not ideal for our clients everyday use. We created reclaimed brick retaining walls. Pathways, ramp and steps in calibrated sandstone. Then installed the Nida-gravel driveway system topped with Yorkshire Cream 10mm. Lawns laid and borders cultivated, ready for the family to enjoy.

### Judges' Comments:

It's a very competent job, with a well established planting scheme. The step risers are executed to a high standard. It's a very aesthetically pleasing garden.



## THE ORIGINAL

**Trex®**

Trex is the World's Number One decking brand and has been redefining decking for 25 years.



Call 01469 535 415 or claim your free sample pack  
[www.arbordeck.co.uk/trex-sample-request](http://www.arbordeck.co.uk/trex-sample-request)

**Trex®**

**arbordeck**





Project Value £80,000-£100,000



## BEST IN CATEGORY

Karl Harrison Landscapes Ltd

Project: Devonshire Avenue

Project Manager/Designer: Karl Harrison

I persuaded the client to let me have carte blanche in the front side garden. I chose to create a planting scheme of *Betula utilis jacquemontii* and a selection of layered grasses with a backdrop of *Cornus sibirica*. The grasses are *Carex morrow Ice Dance* to create a sea of green adjacent to the drive. The *Stipa tenuissima* to move in the breeze to relax the space and *Pennisetum alopecuroides Hameln* for that addition height before the bright red stems of the *Cornus*. The variegated leaves obscure the stems of the *Cornus* during the summer months and the surprise if the bright red back drop for the winter. The odd splash of purple surrounding the stems of the trees was with *Verbena Bonariensis*.... This scheme is not formal, its free flowing with a sense of purpose, it draws you into the property slowly and makes you feel relaxed... I love this garden. Either side of the front door was spoilt with mature *Acers* of varying varieties, weathered limestone boulders and all year-round colour. The rear garden was a simple arrangement of composite decking surrounded by the aluminium frame wrapped in 1/2 millimetre of real timber stained a dark colour for contrast. Climbers of *Bignonia capreolata* and *Wisteria Sinensis* and many of the existing plants from the garden. *Rhododendron*, *Taxus baccata* and *Pittosporum Irene Patterson* to name a few were mass planted for impact. Mature shrubs of *Cornus Kousa china girl* and *Venus* define the new planting.

### Judges' Comments:

The large sweeping bed is spectacular with planting, and the planting either side of the door with interesting and nice combinations. The decking is extremely well constructed. The other borders are well planted, with swathes and blocks of varieties to provide impact in this vacuous space. A great transformation.





## GOLD

Planet 14 Landscapes Ltd

Project: Stable House

Project Manager: Thom Mitchell

Photographer: Cherry Beesley  
(Simply Photography)

The existing patio, which was a mixture of reformed concrete and block paving was tired and broken. We were instructed to come up with a free hand plan (no drawings) to create a seamless, modern look which complemented the traditional ex Colchester Garrison Stables. The construction consisted of a large patio area, stretching along the length of the property, with a new lawn area, new trees and a bespoke constructed garden building. The project was carried out over three months and the client was delighted with the final result, so much so that we have been back carrying out further works to other areas of their ten acre garden.

### Judges' Comments:

The planting has established really well, with a charming bespoke building built as well. It's a very well done project with some great touches and finishes which has given this garden a deserved award.



easigrass™

The UK's Leading  
Artificial Grass Brand

[easigrass.com](http://easigrass.com)



30  
YEARS  
EXPERIENCE



# Boughton

## Natural Soils for Sustainable Landscapes

Natural "as dug" soils for improved drainage,  
microbial and nutritional performance.

Topsoils | Sands | Tree Soil | Green Roof Substrates

The Association of  
Professional Landscapers



grō



01536 510515 | [enquiries@boughton.co.uk](mailto:enquiries@boughton.co.uk) | [www.boughton.co.uk](http://www.boughton.co.uk)





Project Value £100,000-£175,000

## BEST IN CATEGORY

Simply Green Landscapes Ltd

Project: Hermitage

Project Manager: Robert Cottrell

Designer: Andrea Newill Garden Design

The existing outdoor space comprised disjointed, dated gardens as the house had been separate dwellings. Now one home, the new garden reflects this with obsolete walls, parking areas and enclosed spaces replaced with a unified garden suited to the client. An extensive sunken dining and entertaining terrace is located close to the house, with a barbeque area and space for a hot tub. A path leads beneath an oak pergola to the games room, wildflowers and a woodland garden, with water feature and bespoke bench. The design and naturalistic planting enhances views to the rural landscape.

### Judges' Comments:

This project was executed to an extremely high standard. The quality of the workmanship is superb and a delightful space to be in. It was very sympathetically planted in line with the style of the house. The woodland garden was wonderful to walk through and every corner of the garden looked lovely.



Sponsored by

**easigrass™**  
the artificial grass company



## GOLD

Esse Landscapes

Project: Beaconhurst

Project Manager: Martin Jones

Designer: Louisa Bell

Mindful of a garden/paddock boundary, we obtained permission for a new swimming pool at the rear of the house. The pool is surrounded by a large sun terrace, while a further terrace, at the house level, provides space for more formal relaxation and dining. The garden is generously planted and features a new meadow. Table-top plane trees on the main terrace provide shade for diners. The clients commented on our excellent service throughout the build and our efforts in completing the project in time for the first lockdown.

### Judges' Comments:

It was all very well done, the paving was very well finished. The planting was beautiful and the flow into the meadow was seamless.



## SILVER MERIT

Acacia Gardens Ltd

Project: Private Residence, Hampstead

Designer: Herman Pobrati & Beatriz Cabanes

Project Manager: Herman Pobrati

We were appointed by main contractor to work along the Architect and client. Brief was to reinstate the gardens to former glory by keeping it simple, natural and looking almost as it had been there for a long time, also they wanted a contemporary larger patio next to new extension. We did not have much information and had to work with clients that have just purchased the property and the long standing Gardeners and their story how the garden looked before. We improved the borders, new gravel drive, the front lawn areas by looking at google images. Other works included a crazy paving Yorkstone, reinstating the railings, restoring the glasshouse and restoration front wall, steps, side paths and trellis.

### Judges' Comments:

An extremely tasteful and quality landscape finished to a high standard. The landscaping fitted perfectly the style and ambience of the house. Some nice specimen planting and a suitable range of shrubs and perennial plants.

## SILVER MERIT

Bushy Business Ltd

Project: The Beeches

Designer: Acres Wild

Project Manager: David Stone

Client engaged us to rip out their tired existing traditionally styled garden (actually formerly owned by another customer) and working with Debbie we ripped out and brought the garden back to life fit for the client and their young children. Reworking the drive and borders along with the back wrapping around their kitchen extension and existing out buildings. We re-sited a large set of existing stone steps and reworked levels to suit the extension and integrating the new garden in to the surrounding space.

### Judges' Comments:

An interesting and charming project, with a lot of elements included in it. The path has been constructed nicely, the garden was very in keeping and blended nicely with the property, and the clients were extremely pleased with the result.







## SILVER MERIT

Bushy Business Ltd

Project: Poolside Relaxation

Project Manager: Roger Young

Designer: Raine Garden Design

The existing garden had paving wrapping around the house and pool from when the house was built, most of this had moved and was found to have been laid poorly. The new design was to replace all of this with the hardest porcelain to cut in the world and to incorporate planting that softened and created colour and interest and to give some height to what was a very flat space. The pool was regularly used by the client and their kids and they wanted lots of colour for summer entertaining. Raines design ticked all of the clients boxes and created a stunning space.

### Judges Comments:

This is a really lovely scheme, with the paving around the pool completed to a very competent standard. The pointing on the paving is very good and it was a delightful garden to be in.



## SILVER MERIT

Radial Landscapes Ltd

Project: Carrwood

Project Manager: Will Burberry

Designer: Matthew Beesley

Photographer: Oscar Bernstein

The client desired a modern garden fit for entertaining as well as a garden fit for 2 children. Matt designed a garden that kept the adults area separate to the play area but still in full sight. The Design made the most of an awkward plot shape drawing you to what was a dead corner. The project was completed in 10 weeks involving a reduce dig of one side of the garden to make the area flat. The client was ecstatic by the completed project and we feel we have fulfilled the brief above original expectations.

### Judges' Comments:

A nice, crisp and neat project, creating a lovely entertaining space, executed to a high standard.



## SILVER MERIT

Roger Gladwell Landscapes

Project: Blue Sky Barn

Designer: Nigel Philips

Project Manager: Graham Pusey

Photographer: Graham Pusey

Our client at Blue Sky Barn had just moved back to rural Norfolk after living in London for the past 15 years. They converted what was an old cattle barn into the building you see now. The old field was a terrible mess, the ground was waterlogged when we wanted to start and we couldn't get onto it to get going. When the sun came out to dry everything, it then didn't leave, meaning we had new watering problems instead of soaking ground problems. We re-contoured the ground, lost nearly 800 tonnes of the builders spoil in the contours and then fed over 3000 tonnes of topsoil through a huge screener. This was the most cost effective way of improving the rocky soil that was on site. The rocks that were raised from the ground then went into land drainage and soakaways. A job on this scale and I think we took away less than 20tons of waste.

### Judges' Comments:

A lovely large area of paving carried out very well. A huge amount of soil was moved and they transformed the area into a wonderful space for the young children who are into sports.



## SILVER

Goldenstones Gardening

**Project:** Townsend Barn

**Project Manager:** Chris Blackwell

The new occupants of Townsend Barn wished to transform their recently acquired barn and field into a woodland glade with a paved section close to the house, pergola, pagoda and archways leading out onto a walk that circled the garden, planting close to 100 trees, herbaceous flowering borders surrounding a circular lawn with 2 further circular paved sections. A bespoke Larch gazebo at the far end of the garden finished the project. Subtle lighting was added to highlight a Silver Birch Avenue & several feature trees to ensure gardens appeal lasted throughout the evening. In total over 400m<sup>2</sup> of sandstone, 80m<sup>2</sup> granite setts, local Cotswold walling stone, locally sourced and milled Larch created the customers dream garden of a woodland walk including circles and planting. We even managed to add a composting area and raised vegetable beds. A feature Larch post washing line was included to match the existing wood.

### Judges Comments:

This garden met the clients brief, the planting around the circular garden and wild meadow surrounding was lovely.



## SILVER

Landscapia Ltd

**Project:** Modern Classic

**Project Manager:** Leigh Lane

**Designer:** Marc Lane

This garden was very large and not utilised. Our client wanted inspiration and had a strong budget so we were able to build many elements into the garden. We created areas for dining and relaxing/entertaining but also had to ensure there was a large area for our client's daughter to play so we left a large section for her to explore throughout the trees and wild flowers. The main patio area has a bespoke circle of Millboard inserted into the porcelain. Millboard paths link the patio to a large dining area fitted with a chunky pergola which then leads to the lawn.

### Judges' Comments:

The workmanship displayed on this job is great, it was very well planned out and an enjoyable garden to be in.



## BRONZE

Landtech Landscape

**Project:** Outdoor Living Garden

**Project Manager/Designer:** Daniel Baron

The client brief was to create a garden which was relatively low maintenance and all on one level as the client struggles on his feet and wanted a place to chill and unwind and also to entertain. The garden has many different aspects to it with areas to sit and enjoy. The house is situated overlooking fields and is very windy so we created L shaped walls to shelter it. We wanted to keep the fantastic views so a glass balustrade was built to frame the view we created a large metal archway. A large pergola with a sliding roof and glass sliding doors was installed for the BBQ and kitchen area.

### Judges' Comments:

A lovely transformation with great features all carried out proficiently. The outdoor kitchen was built well.







Project Value £175,000-£250,000



## BEST IN CATEGORY

Esse Landscapes

Project: Thicket Rise

Project Manager: Martin Jones

Designer: Louisa Bell

Our clients purchased a tract of woodland beyond their rear boundary that offering a unique opportunity to extend views from the house. As well as constructing a large cantilevered deck over the woodland, we extended the gardens to either side of the house, with a sunken dining area, outdoor kitchen and an oak-framed summerhouse with gym, overlooking a raised boardwalk with lush planting and a central water feature.

The summerhouse features an open seating area with log-burner for year-round outdoor entertaining, something that proved invaluable during the various COVID lockdowns!

### Judges' Comments:

The cantilevered deck was brilliantly engineered, the use of planting and detailing on the garden was delightful. A well deserved award with top notch landscaping.





## GOLD

Roger Gladwell Landscapes

Project: Family Garden

Project Manager: Graham Pusey

Designer: Camilla Jousiffe

Photographer: Graham Pusey

Our client for this project has a young family and a little dog. They wanted a new garden to include various levels and textures and all along the same contemporary theme. There was the outdoor kitchen, sun deck and porcelain paving throughout. We also installed a full irrigation system with a 5000 litre underground water harvesting system with auto top up. The bottom of the lower garden is a wildflower meadow for a slightly more wild look.

### Judges' Comments:

This job includes many superb elements including the fencing, the planting and the outdoor BBQ area. On entering the rear gate you are confronted with a beautifully designed pergola, the finish on this is near faultless and is an outstanding feature.



2021 winner





Project Value over £250,000

## BEST IN CATEGORY

Langdale Landscapes Ltd

Project: Sevenoaks Project

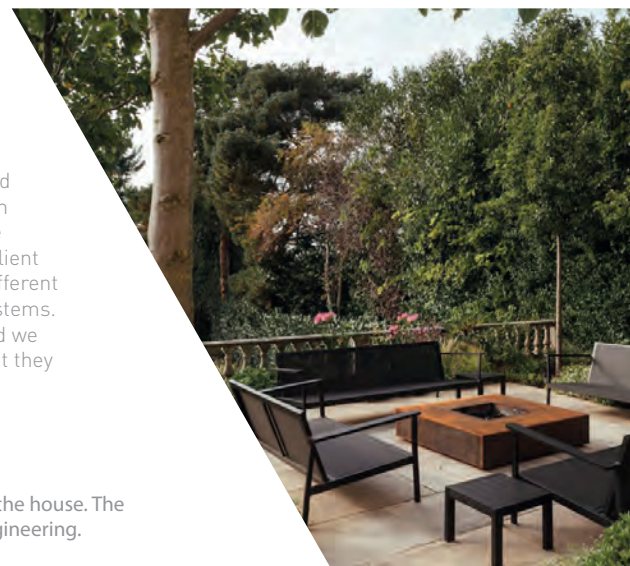
Project Manager: Nik Edser

Designer: Nic Howard

The Project involved redesigning a town garden to incorporate a new swimming pool and garden scheme to create a lovely entertaining space along with screening to a new development next door. The project took 6 months to build and involved us working alongside the pool contractors to build what was a complicated project. We had an issue with the top terrace that when lifted was found to have been built on to 600mm of pure ballast which needed removing. This meant redesigning the foundations for the terrace and building a structural wall to support it all, it was an additional cost to the client but was necessary to get the garden built. The buildings were all built by us and had different uses given the locations in the garden, all have fridges and out door TV's and sound systems. The project is a great transformation and the clients are delighted with the scheme and we have been back many times to take photos and we have over delivered on this with what they were expecting.

### Judges' Comments:

The paving has been extremely cleverly done with use of materials, to stay in keeping with the house. The planting works harmoniously throughout the garden, and the overall project is a feat of engineering.





Project Value over £500,000



## BEST IN CATEGORY

Transform Landscapes Design and Construction

**Project:** Surrey Hills Garden **Project Manager:** Simon Gray

**Designer:** Taylor Tripp **Photographer:** Juliette Gray

In 2019, Taylor Tripp Garden designers presented us with the concept plan and asked if we could build their design. The garden presented several challenges, including requiring retaining walls halfway up an existing hillside. The work was comprised of extensive hard landscaping, timber retaining walls, York stone terraces with reclaimed cobble, removal of buried tennis court, Oak pergola, automated irrigation system, lighting system, new lawns, wildflower areas and several borders with mature hedging and planting.

### Judges' Comments:

A fantastic project with lots of different areas, including a lot of engineering. A huge amount of planting with great attention to detail. A very well thought out scheme.







# BEST IN CATEGORY

Kingston Landscape Group

**Project:** Padcroft

**Project Manager:** Adam Cheadle

**Designer:** Tavistock Gardens for Redrow Homes

The brief was the installation of a series of stunning landscaped courtyards for use by the residents. Our works consisted of bespoke corten steel planters, play equipment, paving, tarmac surfacing, planting, trees, natural and artificial turf. Project was logistically challenging, all materials had to be moved with tower cranes, site was very compact so works and deliveries had to be carefully co-ordinated. We were very pleased with the outcome of this project and the end product achieved.

### Judges' Comments:

Stunning work in the courtyard areas, particularly the corten steel work. A great example of a community garden scheme and the space can be enjoyed in the future.

Sponsored by



**Boughton**





## SILVER MERIT

Kingston Landscape Group

**Project:** Clarendon Road

**Project Manager:** Keiran Murphy

**Designer:** James Turner from LDA

We were told this was the one of the largest parks built by St William. The future plans are for St William to build many high rise apartments so, they wanted a large green area running through the spine of the development. The toughest part of the project was the timescale. We had the play equipment arriving from Germany but it had very long lead time, and the handover date was not moving. So it was a real push to get done in time.

### Judges' Comments:

A tight and concise project. It was executed to a very high standard, with a really attractive planting scheme. The tree planting was great and have become well established.



## SILVER

Kingston Landscape Group

**Project:** Hounslow High Street Quarter - Block D

**Project Manager:** Tom Beck

The project consisted the install of a compact Communal Roof Garden installed on top a sixth floor roof, works were undertaken with restricted access and a restricted program, all materials had to be lifted onto roof via mobile Crane. We had a very restricted depth of roof to work with and we had to ensure that a safe parapet height was maintained at all times

### Judges' Comments:

This project created a lovely environment for the community to use with nice detailing.







## BEST IN CATEGORY

Adam Vetere Landscape & Garden Design

**Project:** The Ravine Garden

**Project Manager:** Adam Vetere

Inspired by The Lost Gardens of Heligan, The Ravine Garden was created to deliver a truly vibrant planting scheme which would provide interest all through the year and would increase the bio-diversity of the site significantly.

The site conditions are unique with a cool, damp and shady valley floor, which graduate through east and west facing banks to the hot and dry planting of the southerly facing banks. As such, the conditions were both a challenge and a huge opportunity to blend diverse, yet fascinating planting schemes which would thrive in The Ravine.

### Judges' Comments:

This has an extremely sophisticated planting scheme including a lot of research into the choice of plants. It functions beautifully all year round, it feels like an oasis to be in. Overall it's a fantastic finished garden.





## GOLD

Abbey Garden Landscaping

Project: Low Poles Farm

Project Manager: David Milloy

Designer: Jo Thompson

Situated in rural Kent, the planting scheme at Low Poles Farm focused around the conversion of an old barn and was key to softening the traditional brick walls and the generous terraces laid with a combination of honed and sawn yorkstone and Dutch clay pavers.

The swimming pool combined sections of clipped purple beech hedging, late flowering perennials and height giving grasses, with a series of cubed hornbeam trees providing a greening vertical presence to the tall courtyard walls.

Planting in stepped, raised brick terraces created a waterfall effect by the use of flowing grasses and herbaceous plants, whilst a silver birch avenue gave structure to the lawns, leading the eye to the country side beyond.

### Judges' Comments:

The brief was to attempt to give sections of gardens privacy, good all year around colour and some structure. The most recent addition was the line of Birch. They are planted extremely well and with the lighting give an excellent feature. Bio diversity was quite important and the garden does attract a lot of wildlife. It's a stunning garden, beautiful surroundings and a pleasure to visit.



## GOLD

Longstock Landscapes

Project: Soft landscape for private residence in Chilworth Hampshire

Project Manager: Shaun Beale

Designer: Andy Sturgeon

Our brief was to follow the planting plan produced by Andy Sturgeon like all projects these plans have evolved and changed with their release.. Hard Landscaping gave us a start date in April however it was the end of May before we were able to commence. During this extended period we had to maintain all the plants to keep them in top condition. The unseasonable dry April weather proved challenging, followed by a cold, wet May. The clay soil with over 120 tonnes of fresh topsoil was unworkable. It was necessary to work behind the builders, following them as they worked their way out of the garden

### Judges' Comments:

A great planting scheme incorporating complementary new planting and the project shows great endeavour. The choice of planting will establish extremely well and it felt impressive walking round the garden.





### SILVER MERIT

Bushy Business Ltd

**Project:** First Street  
**Designer:** David Stone

**Project Manager:** David Stone

The client wanted a sleek but traditional garden to suit their renovated town house. Lead planters and bespoke metal trelliswork were fabricated and installed with pared down, simple evergreen planting to give a tapestry of green interest through the seasons. A tricky install during the pandemic was brought together with skilled specialists using traditional and modern methods of fabrication brought together in a small London oasis.

#### Judges' Comments:

As a package, a really nice little project. It was very difficult to get deliveries to, there were a lot of steps and narrow roads in the centre of Chelsea. All planting was carried out competently and correctly.



### SILVER MERIT

Karl Harrison Landscapes Ltd

**Project:** Devonshire Avenue  
**Project Manager/Designer:** Karl Harrison

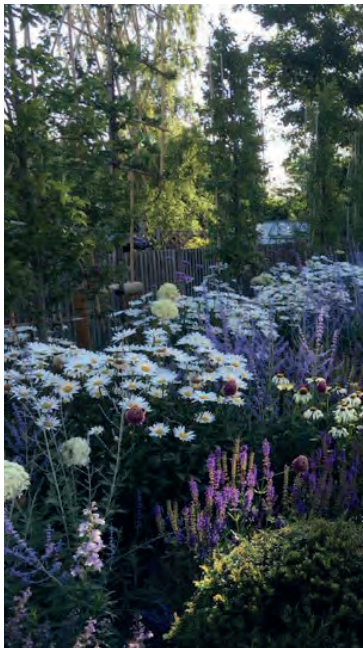
I chose to create a planting scheme of *Betula utilis jacquemontii* and a selection of layered grasses with a backdrop of *Cornus sibirica*. The grasses are *Carex morrow* Ice Dance to create a sea of green adjacent to the drive. The *Stipa tenuissima* to move in the breeze to relax the space and *Pennisetum alopecuroides* Hameln for that addition height before the bright red stems of the *Cornus*. The variegated leaves obscure the stems of the *Cornus* during the summer months and the surprise if the bright red back drop for the winter. The odd splash of purple surrounding the stems of the trees was with *Verbena Bonariensis*.... This scheme is not formal, its free flowing with a sense of purpose, it draws you into the property slowly and makes you feel relaxed... I love this garden. Either side of the front door was spoilt with mature *Acer* of varying varieties, weathered limestone boulders and all year-round colour. The rear garden was a simple arrangement of composite decking surrounded by the aluminium frame wrapped in 1/2 millimetre of real timber stained a dark colour for contrast. Climbers of *Bignonia capreolata* and *Wisteria Sinensis* and many of the existing plants from the garden. *Rhododendron*, *Taxus baccata* and *Pittosporum Irene Patterson* to name a few were mass planted for impact. Mature shrubs of *Cornus Kousa china* girl and *Venus* define the new planting.

#### Judges' Comments:

The borders are well planted, with swathes and blocks of varieties to provide impact in this vacuous space. A great transformation. A beautiful array of plants have been chosen to the front on the house and is very eye catching.







## SILVER

Bushy Business Ltd

Project: Surrey Planting

Designer: Raine Garden Design

Project Manager: Chris Stone

The client loved their new multi-level landscaped garden with its substantial flowing borders and large entertaining spaces, but quickly realised the planting didn't work for them.

Raine Garden Design provided a new scheme using a simple backbone of pleached trees, Parrotia columns, shrubs and grasses allowing the strong herbaceous planting to work off. A real summer garden of colour, the client now has their finished, dream garden.

All this through work was carried out through the early stages of the pandemic meaning we had to work in a different way, sourcing materials from all over, trying to schedule and bring everything together, all whilst keeping a 'safe' 2m distance.

### Judges' Comments:

A lovely naturalistic scheme in the main, with the addition of some formality at the upper levels. The brief was for a softer feel to the garden and one that would perform at its best in the summer months and this ticks all the boxes.

## SILVER

Lupin Gardening Ltd

Project: Restoring peace and tranquility to a neglected Georgian garden

Project Manager: Julia Watkins

Designer: Melanie Smith, Gardenplan Design

Photographer: Craig Stephens

The owners wanted somewhere to unwind after their demanding days, and to entertain. They requested colour and seasonal interest, and they wanted the garden to incorporate the existing wisteria and several large acers - which were almost the only plants that would remain following the refurbishment.

We suggested that the terrace area (Phase 1) should have a formal aspect to give evergreen structure throughout the seasons, but with an abundance of colour in the growing months. A corten steel bowl sits in the middle of the raised border here, so the planting included geums to pick up the coppery surface. The lawn areas (Phase 2) were to be more informal - a mixture of shrubs and herbaceous perennials - in keeping with the shady aspect, the existing acers, and the customer's desire to have a 'Japanese' corner. A 'dry river bed' is included in the far corner, and we used hakonechloa to suggest water and movement on its edges.

### Judges' Comments:

They worked with the clients to establish what they liked and didn't like and produced an extensive planting plan to try and accommodate what they liked and also incorporate many of the existing specimens that were to be retained. It's a lovely scheme and well delivered.



## BRONZE

Roger Gladwell Landscapes

Project: Walled Garden

Designer: Camilla Jousiffe

Project Manager: Graham Pusey

Photographer: Graham Pusey

Our client had recently moved into a very contemporary stark building. It needed to be softened with some added interest in what was a large space with nothing more than grass. We had to dig out all of the planting beds to improve the soil structure, hollow tine and aerate the lawn then topdress. We also added in a full irrigation system to ensure that it was as easy as possible.

### Judges' Comments:

Everything was planted well, including hedges and trees. An irrigation system was installed and some feature lighting and a new lawn laid, all competently finished.





# BEST IN CATEGORY

SPONSORED by  
**BRADSTONE®**

The Bath Garden Company

**Project:** Beacon Wood House

**Project Manager:** John Castignetti

**Designer:** Stonewood design/The Bath Garden Co

The Clients brief was to carry out a hard landscaping project based on some designs produced by a building company called Stonewood design. However the project soon totally developed into a much larger project.

The project is safe to say is one that evolved on a monthly basis with works being added all the time, this is something that as a team we did seem to enjoy and thrive on, not always having drawings to rely on was sometimes challenging but did make it interesting. The project is basically divided into two areas although all the work is to the front of the property we have the hard landscaping for the 150m long driveway leading to a turning circle in front of the house, then leading to the east of the property which is to become the clients garden area with borders lawn areas and an outdoor kitchen.

### Judges' comments:

The landscaping is impressive and adds considerably to the ambience of this magnificent house. The quality of workmanship is excellent throughout, with the finished landscaping the culmination of 18 months of work.







## SILVER MERIT

Goldenstones Gardening

**Project:** Tickmorend Wall

**Project Manager:** Chris Blackwell

Goldenstones were tasked with the addition of a new electric entrance sliding gate, stone pillars & Cotswold stone walls linking back to the boundary for a large Air BNB.

### Judges Comments:

The wall has constructed excellently and creates a beautiful entrance to the property. A great hard landscaping skill displayed.



## SILVER MERIT

Radial Landscapes Ltd

**Project:** Carrwood

**Project Manager:** Will Burberry

**Designer:** Matthew Beesley

**Photographer:** Oscar Bernstein

This project involved a reduce dig to the left hand side of the garden to give us a level black canvas, the bar area was constructed from block-work and clad in Design clad. The Vistafolia green wall around the television was used to soften the bar area whilst creating zero maintenance and allowing the tv to be recessed into it.

The main paved area was designed to work for whole slabs to give a minimalistic feel keeping all lines flowing through.. A full land drain system was placed throughout the lawn which was also edged in porcelain cut on site.

### Judges' Comments:

A very smart scheme, with solid construction techniques. A real eye for detail was required for the seating area and it was carried out very well.



## SILVER MERIT

Roger Gladwell Landscapes

**Project:** Latimer House

**Designer:** Camilla Jousiffe

**Project Manager:** Graham Pusey

**Photographer:** Graham Pusey

Latimer was bought by our client and they undertook some huge renovation works inside and out. The main aim of the house is to have it as a high end holiday rental. Outside we removed all traces of the existing failing terrace and designed a new entertaining terrace with amazing views overlooking the sea. We installed a full water harvesting tank and irrigation system to keep the lawn in top shape.

### Judges' Comments:

The paving on the patio is very accomplished, the two brick pillars were done well and the steps as a feature looking back on the house were very well executed







### BRONZE

Mango Paving & Landscaping Ltd

**Project:** Cobble Driveway (Lustleigh Devon)

**Project Manager:** Jerry Pullen

**Designer:** Roxanna Jaudat

In keeping with the beautiful surroundings located on the edge of Dartmoor, the client wanted a practical and functional driveway but with a traditional feel. A cobbled driveway with a mix of grey and tan replaced the old fine gravel and scrub surface. The drainage was addressed during the ground preparation and although the logistics took considerable consideration with large vehicles and narrow Devon country lanes, we got there in the end. The client was very happy with the result and we are very proud.

#### Judges' Comments:

This hit the client's brief exactly and they had to contend with difficult access leading up to the property. Structurally it is built to the correct specification.

**Makita**

**XGT**

[makitauk.com/XGT](https://www.makitauk.com/XGT)

**PLATIPUS**  
LANDSCAPE SOLUTIONS

**Tree Anchoring Systems**

**G-WALL Living Wall**

**01737 762300**

**www.platipus-anchors.com**





## BEST IN CATEGORY

Andy Lewis Landscapes

**Project:** Grayshott

**Project Manager:** Andy Lewis

A fully unique garden building nestling in an already interesting garden. My client wanted something special and fully unique. We were given a lot of freedom during the design and build process. Opportunities to make the build even more interesting came up frequently and the client was extremely supportive of our ideas.. it was a dream build really. Incorporating materials that have stood the test of time - stone and wood

### Judges' Comments:

A wonderful example of a brilliantly designed and constructed garden feature. It has been sympathetically designed to fit into the garden seamlessly with parts such as the living roof. Clever touches including the key holder show a well considered feature.







## Overall Design & Build



# BEST IN CATEGORY

Langdale Landscapes Ltd

**Project:** Kings Avenue

**Project Manager:** Nik Edser

**Designer:** Rachel Reynolds

The client wanted a contemporary garden with good screening and lush planting. It was a small space and they were very specific on the detail so the design had to incorporate a lounge area a dining area and an area by the house that brought the outside indoors when the doors were open. Rachel designed a lovely scheme that really embraced all of the requirements and created a beautiful space. The project took 3 weeks to build and was made more tricky due to the access which was up a flight of steps to a communal alley along the back of the houses.

Given the size of the garden I was delighted with the outcome and it really is a lovely space that I still can't believe fitted in to the small garden that we started with! The clients are absolutely delighted with it and we have been back a few times to photograph it as it matures.

### Judges' Comments:

An extremely sharp piece of work, beautiful movement in the design with crisp lines and it was executed skilfully.





## SILVER

Landscapia Ltd

Project: Clent View

Project Manager: Leigh Lane

Designer: Marc Lane

Thankfully we were on the same page and created a completely unique concept with brave bold choices of materials and shapes. We worked very close to striking a perfect balance between soft and hard landscaping using many different techniques and skill sets whilst the client took control of the planting. This was a very complex project due to the awkward plot and changes in levels and our client is absolutely delighted with the results.

### Judges' Comments:

A lovely project, designed and built to a high standard. It met the client's brief very well.



## BRONZE

Greenscape Landscaping/ Arboriculture

Project: Glass/ Slate & Steel

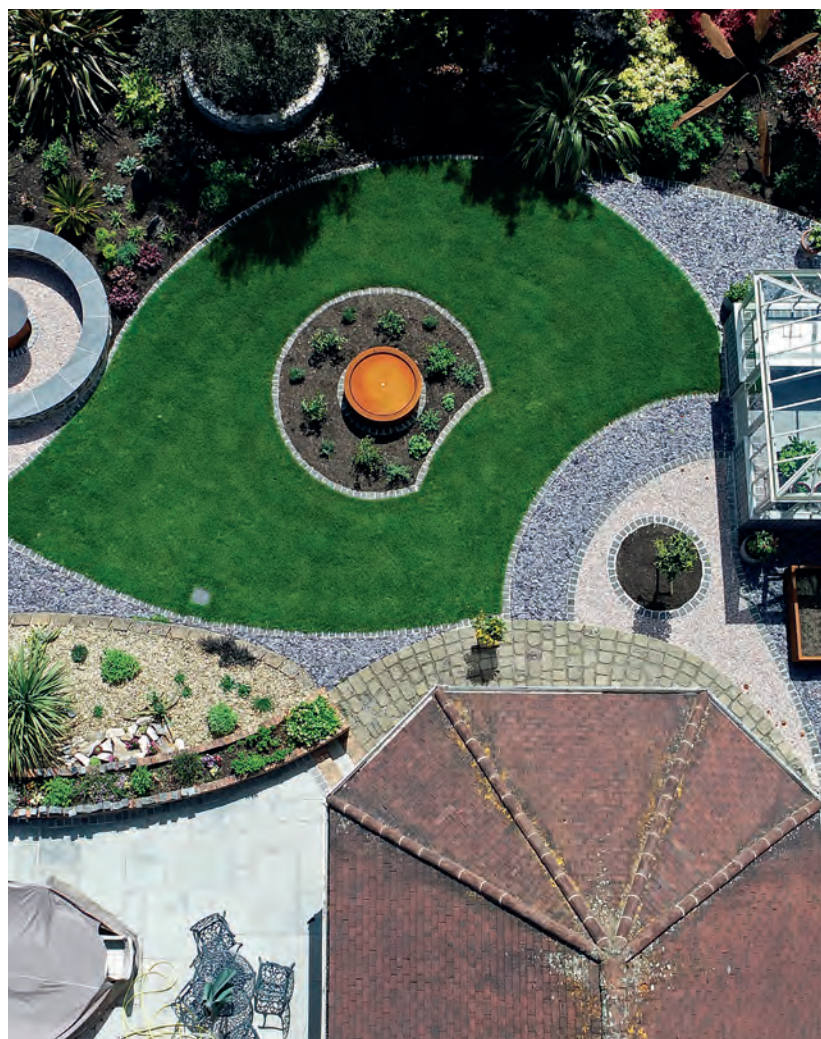
Project Manager: John Paver

Designer: John Paver

After purchasing a Victorian glass house from Hartley botanic and a Corten steel fire pit, my client contracted us to install the base for the glasshouse and to create a sympathetic design around the building. We had to match in with their property and their existing planting scheme, to include a seating area which incorporated the fire pit. Siting the glass house correctly was our top priority and maintaining parallel alignment to the property. (The glasshouse base had to be built following Hartley's strict plan with a 4mm tolerance which we delivered to within a 2mm spec) I then introduced welsh slate as a third key element, initially using it as the coping stone for the fire pit seating, all the templates for which were handmade by myself. We added more Corten features to the garden, dividing these equally through the area to balance the design, including steel sculptures that were introduced to the planting areas.

### Judges' Comments:

The garden is aesthetically attractive and interesting. There has been a tasteful choice of features and plants, resulting in a quality landscape.







## BEST IN CATEGORY

Adam Vetere Landscape & Garden Design

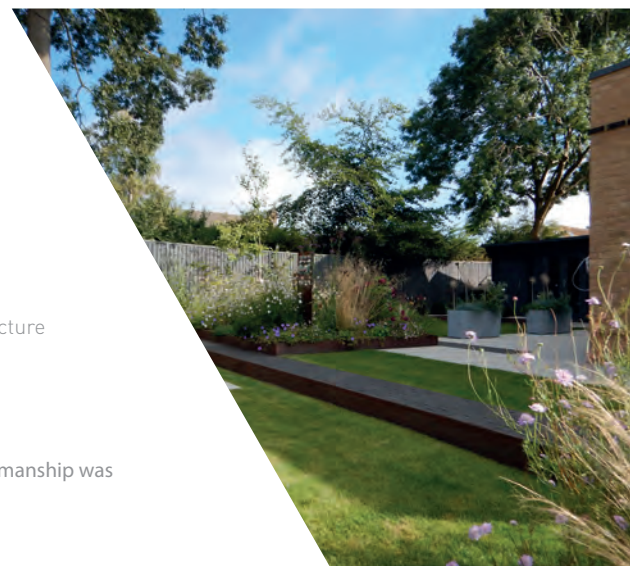
**Project: An Artist's Garden**

**Project Manager/Designer: Adam Vetere**

The client, an Artist and Glass Sculptor, has an eye for bold use of colour, striking lines and forms, contrast textures, which in turn were replicated in the final design. The overall scheme has delivered life and vitality to the garden, which it previously lacked. The key was to create a feeling of intimacy and seclusion, while delivering an environment for the client to enjoy by herself or with friends and family, including the grandchildren. She is an avid gardener and loves to garden, so raised beds and an inspirational planting scheme were delivered. From a practical standpoint, I had to incorporate a large artist studio (4m x 2.5m), several seating/terrace areas, raised and sunken areas, an area for the grandchildren, which had to be coupled with an exquisite planting scheme which works hard from March - October, but retains interest and structure throughout the winter.

### Judges' Comments:

A dynamic and interesting shaped garden. The attention to detail was superb and the workmanship was fantastic. It shows a great understanding of garden design.







## SILVER

HollandGreen Landscapes

**Project:** English Cottage Garden, Oxfordshire

**Project Manager/Designer:** Mark Latchford

**Photographer:** Ellie Walpole

The brief was to design a beautiful English cottage garden for a young family, with a sense of magic at the heart of the design. The transformed garden includes a new heated pool and a sunken spa, with stunning views to the fields beyond. The stunning planting adds the finishing touch. Swathes of Salvia woven through mixed herbaceous borders create magical movement and a tapestry of colour and texture loved by both the homeowners and the bees. A reclaimed oak-framed pavilion with wood burner stove completes the outdoor living space. Close collaboration with both the client and our HollandGreen Architect team who transformed the cottage has resulted in a harmonious link between indoors and out enjoyed by all the family.

### Judges' Comments:

There is beautiful planting in this garden, a lovely transformation of the space.

## BRONZE

HollandGreen Landscapes

**Project:** A Green Retreat

**Project Manager/Designer:**

**Mark Latchford**

**Designer:** Ellie Walpole

Our client's brief was to complement the clean lines of the newly refurbished family home and bring simplicity and serenity to the outdoor living space, creating a peaceful sanctuary for contemplation.

To create an ambiance of tranquillity, our design included the gentle sound from a water feature and a cosy pod seat, surrounded by lush planting with layers of textures.

The space includes a calming refuge amongst tall tree ferns in view of the garden sculpture and surrounded by shades of green. Our client loves their new space and the harmonious link between indoors and out, achieved by working closely with the HollandGreen Architect team.

### Judges' Comments:

The client was really pleased with the final result. There are attractive and successful parts to this garden, competently finished.







## BEST IN CATEGORY

Simply Green Landscapes Ltd & Andrea Newill  
Garden Design

**Project:** Hermitage

**Project Manager:** Robert Cottrell

**Designer:** Andrea Newill

The existing outdoor space comprised disjointed, dated gardens as the house had been separate dwellings. Now one home, the new garden reflects this with obsolete walls, parking areas and enclosed spaces replaced with a unified garden suited to the client. An extensive sunken dining and entertaining terrace is located close to the house, with a barbeque area and space for a hot tub. A path leads beneath an oak pergola to the games room, wildflowers and a woodland garden, with water feature and bespoke bench. The design and naturalistic planting enhances views to the rural landscape.

### Judges' Comments:

A stunning project that was expertly, built and planted. From any viewpoint it looked beautiful, a true example of great collaboration.

Sponsored by





## SILVER MERIT

Bushy Business Ltd & Raine Garden Design

**Project:** Poolside Relaxation

**Project Manager:** Roger Young

**Designer:** Raine Garden Design

A large garden needing a strong connection to the luxurious interior of the home. The clients wanted an enlarged, impressive new terrace surrounding the pool, together with an attractive outdoor al fresco dining area. They wanted the style to be both contemporary, as well as being heavily planted with herbaceous perennials, also being in a limited colour palette. They wanted impact.

Creating the balance of these two (often opposite) styles together, seemed to be my challenge. I created a contemporary design with some powerful planting features including pleached Carpinus Betula and two, multi-stemmed Catalpa bignoniodes, framing the terrace, though all softened with the sumptuous planting affect they desired. The porcelain paving stone was chosen, including the paving design of using porcelain planks, which will lead you through to the next phase of the build, the entertainment area. With all of the huge windows at the back of the house, this garden needed to look fabulous inside and out.

### Judges' Comments:

A pleasing garden to be in and proficiently done, the planting is very pretty. It's clear to see a good working relationship between both the landscaper and designer.



## BRONZE

HollandGreen Landscapes & The Secret Landscape Company

**Project:** A Green Retreat

**Project Manager:** Mark Latchford

**Designer:** James Tunstall

**Photographer:** Ellie Walpole

The design and build project 'A Green Retreat' is testament to a successful collaboration between two APL members (Landscaper and Designer), who regularly work together to combine design skills with technical landscaping and horticultural experience. The result is a tranquil, quality garden to relax in that has exceeded the clients' expectations. With this project Mark Latchford, the HollandGreen Landscape Design Director and James Tunstall of 'The Secret Landscape Company,' both knew the client well having built her previous garden together when working with a former company. They had established a strong and rewarding relationship already and were delighted to be invited to work with her again on her new project, along with the HollandGreen Architect and Interior Design team to fully transform her new home.

### Judges' Comments:

The paving in this garden was great, the building and design all competently carried out with consideration to the client's brief.







## BEST IN CATEGORY

### Your Garden Needs

Project: The Traditional Garden

Project Manager: Andy Coxon

Designer: Selina Botham – Designs For All Seasons

Photographer: Sean Ellis

The garden designer referred us to the client to maintain and develop the forecasted vision after garden completion. We created a detailed annual plan consisting of required hours, deadlines and areas additional work may be needed. Initial challenges such as watering, plant establishment and management in peak periods were solved by our flexible and professional approach. We also implemented spring displays, lawn care management, fertilising and pesticide control, wildflower meadow management, planning, sourcing, growing, and harvesting an organic fruit and vegetable area.

The client is impressed by our passion and expert knowledge, and ability to achieve a flourishing garden year-on-year. It is a lovely garden to work in and we all feel privileged to be involved with its care.

### Judges' Comments:

The passion for garden maintenance shines through in this garden. This is a stunning garden and there's a lot to do for the time they are there. There has been excellent training in the Wisteria and is very well maintained.

Sponsored by

***Trakita***<sup>®</sup>







## GOLD

Creative Landscape Co. Ltd

**Project:** Timbers

**Project Manager:** Ryan Prower

**Designer:** Creative Landscape Co. Ltd

The property is situated within the grounds of a National Trust site meaning access to the property is challenging at times due to visitors entering and leaving the site. As well as this, animals, such as deer, often cause damage to the garden. We designed and built the garden to replicate the client's childhood home and therefore it is of great sentimental value. Our requirement is to keep the garden in pristine condition throughout the year. The garden is made up of a woodland, large lawn and entertainment area. We implement a structured seasonal plan to ensure areas get the care they require all year round.

### Judges' Comments:

The main lawn was in exceptional condition. The knowledge of the team maintaining this garden was extensive and they worked very closely with the clients. This is a real challenge to keep this garden looking good, with so many elements to consider. It is a very well run site.



## SILVER MERIT

Bushy Business Ltd

**Project:** Surrey Maintenance

**Project Manager:** Graham Nunns

**Designer:** Raine Garden Design

After we completed the soft landscaping works the client wanted Bushy Business to care for their newly planted borders. With only monthly visits we work closely with the client to keep the garden looking its best, managing the planting to get the longest flowering period possible. With a large amount of herbaceous planting around a simple shrub backbone the garden has a relaxing feel despite its central location.

Working with the passionate client has proved rewarding for both parties appreciating the others input and views. Constant dialogue has brought out the best garden possible for the client where we, together, can help the garden reach its full potential.

### Judges' Comments:

A great example of maintenance. The garden was well looked after and the process was excellent. They go above and beyond for their clients and promote new ideas regularly, with fantastic communication and programming.





### SILVER MERIT

Creative Landscape Co. Ltd

Project: Warren House

Project Manager: Ryan Prower

Designer: Creative Landscape Co. Ltd

We secured the maintenance contract for this prestigious garden in 2012. The grounds at Warren House required fresh management and rejuvenation to realise the gardens full potential and splendour. Our specification is to maintain the grounds to an exceptional standard incorporating correct horticultural principles to ensure it looks it's best during the garden party season from June to September. The client requested eye-catching interest from point of entry at the main gates until the property is reached. We provide a team of two once a week during the summer months and have a consistent seasonal management program for the lawns. The lawncare is a key area of consistency for the client as it ties all the areas together from the Jurassic beds up to the more formal planting around the house into the stunning Japanese garden. The Japanese garden is treated as a separate entity which we visit fortnightly. This increases during leaf fall to smaller additional visits to protect the featured planting.

It is rewarding to see our development plans, expertise and hard work pay off to provide a unique atmosphere which provides continuous enjoyment for the family.

#### Judges' Comments:

A well maintained garden, which incorporated a long drive, some very mature borders and a Japanese garden. An impressive looking garden.



### SILVER MERIT

Creative Landscape Co. Ltd

Project: Darbys

Project Manager: Ryan Prower

Designer: Creative Landscape Co. Ltd

We took over the garden in 2018 from another maintenance firm. The client was unhappy with the state of their large lawn area so rejuvenating this was our primary focus. The garden boasts a variety of themes which required redefining to ensure that this is a garden that can be enjoyed all year round.

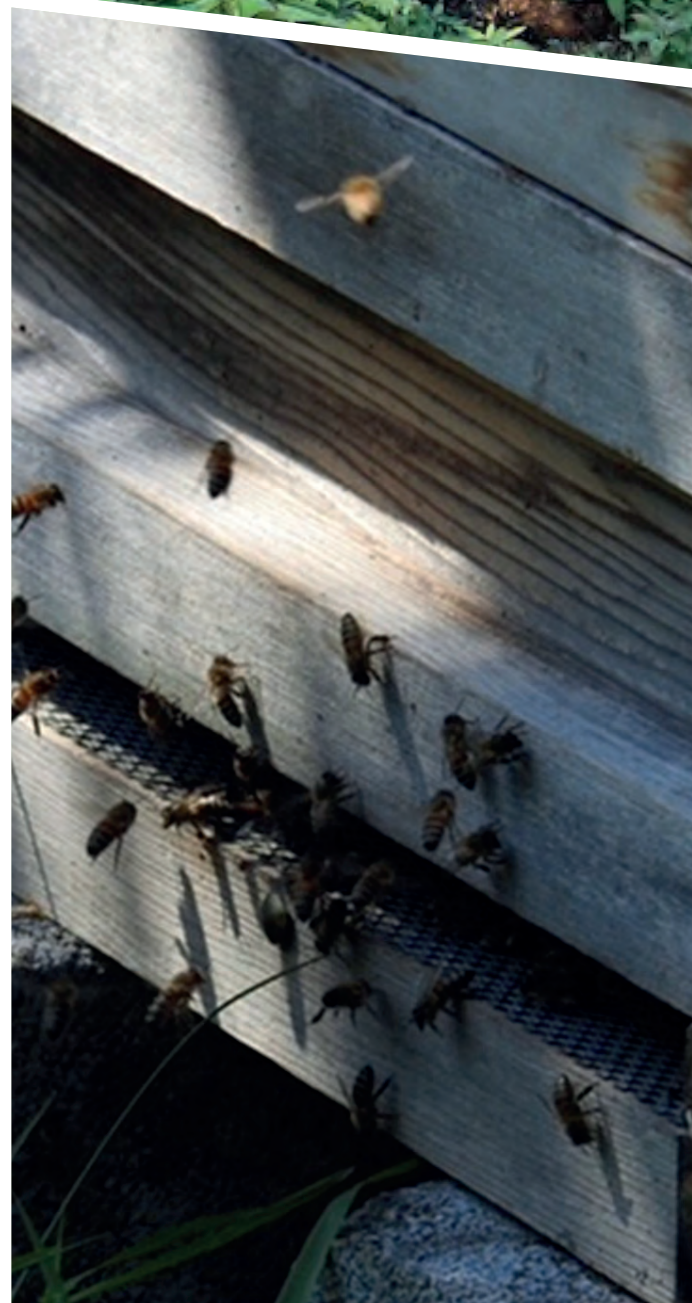
Our plan was to make the most of what the garden already offered but improve the system of care. We found the lawn to lack vital nutrients and had heavy wear in a lot of areas. We introduced a specific lawn care routine to get the most out of these areas. There is no irrigation on-site so ensuring correct feeding and preparations for the lawn are carried out correctly is key.

The garden offers deep mixed borders with year-round interest. These require a consistent, methodical approach to restore the formality which had been lost prior to us taking over. We visit forty times per annum, weekly through April to November.

#### Judges' Comments:

This is a super garden, full of interest and some fantastic variance in shrubs. Both owners are born again keen gardeners and the relationship with the lads was extremely close. They work as a team and this was nice to see. In this garden again creative were bringing ideas to the table, helping the owners not only maintain, but improve and innovate. A really good example of what a garden maintenance team should operate like.





## SPECIAL JUDGES AWARD

Frognaal Gardens Ltd

Project: UCS Nature Garden

Project Manager: Noel Brock

Designer: Katy Staton

Photographer: Alice Brock

The brief was to :

1. Enhance biodiversity.
2. Enthuse successive generations of kids with a love of nature.
3. Provide a long term refuge for locally threatened wildlife.
4. To give pupils hands on experience of growing fruit and vegetables, in raised beds.

The design and spec was sufficiently loose in places to require on site improvisation. Some non available materials (e g the porphyry plattens) had to be substituted , and we approved each substitution with client and designer before sourcing (e g the concrete log round stepping stones)

### Judges' Comments:

We have to commend this project for encouraging more wildlife and nature into this school garden and also the involvement in teaching the children about biodiversity. It's a great example in consideration of the environment.





# HTA BENEVOLENT AWARD

Alfresco Landscapes

**Project:** Rainbows Hospice Remembrance Garden

**Project Manager:** Alastair Peat

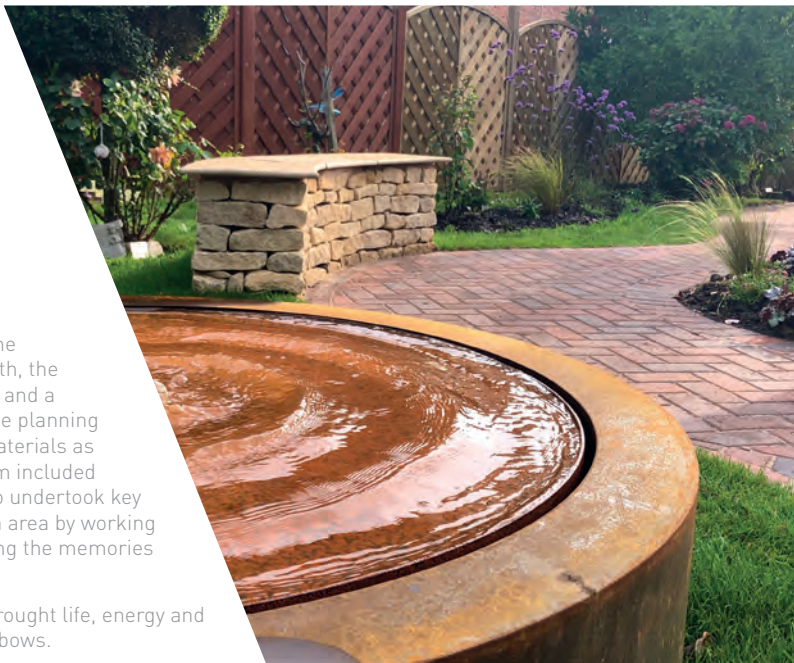
**Designer:** Vara Design

This project regenerated the remembrance Garden which supports the bereaved families of over 500 children. With a tight budget to work with, the scheme sought to create new access ways, seating, reflective spaces and a central remembrance feature. Alfresco became heavily involved in the planning phase to ensure sustainability through reusing as many of the site materials as possible whilst keeping the integrity of the scheme. The Alfresco team included APL apprentice Will Jones and World Skills finalist Eliot Johnson who undertook key construction roles within the project. The challenge was to elevate an area by working within the confines of the existing memorials and structure, respecting the memories present of the families, whilst moving many tons of material.

"The Sensitivity of the execution was respectful of the past and has brought life, energy and a sense of sacred into what was a static space" David Hamilton, Rainbows.

## Judges' Comments:

The re design and refurbishment of Rainbow Hospice Remembrance Garden for Greenfingers Charity was a challenging project, but one the team from Alfresco couldn't turn down. It was a limited budget and many existing materials had to be re-used. But along side that was the sensitivity that had to be displayed throughout the whole project, as this space would still be attended by grieving relatives. Alfresco worked in collaboration with MAPL designers VaRa designs to complete a charming, restful, reflective space for the relatives and staff of the hospice. They did so with a huge amount of integrity and for thought and are a credit to themselves and the industry they operate.





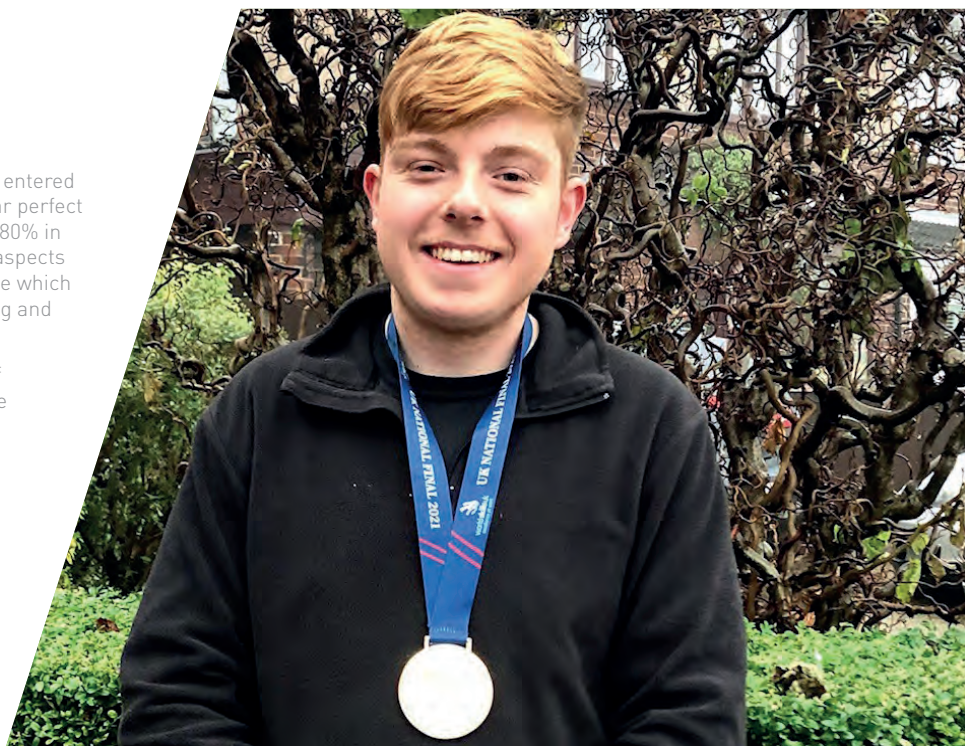
## WINNER

### Cameron Barker

Cameron is an Apprentice at Myerscough who was entered in to the WSUK competition. After submitting a near perfect score on his passive test, he went on to score over 80% in the practical final. Cameron displayed skills in all aspects of the build, as he calmly put together the test piece which included Paving, Decking, fencing, Planting, lighting and water features.

He was methodical and accurate and was on top of all that a really nice chap to have around. Well done Cameron. WSUK Champion 2021

Sponsored by



## APL SUPPLIER OF THE YEAR

### Steintec

Every year we hear of companies that support the members of this industry with excellent service, knowledge and engagement. Occasionally there are also members that are able to support the association in its own strategic ambitions as well.

Steintec are that company. Not only are they servicing their own clients extremely well with technical team to support designers, specifiers, contractors and installers. Also a support team to assist contractors on site. But they have invested in CPD approved training and have been invaluable support with APL and their Construction Guidelines. They are passionate about standards and training and the provision of good reliable info for the whole industry.



The Landscaper's Circle is the only online membership and coaching programme exclusively for garden designers, landscapers and horticultural businesses. Aiming to improve the marketing and business practices for horticultural business owners across the UK. Being part of TLC is the only way to fast track your garden design or landscaping business to the next level with the added bonus of having an experienced marketer, business owner and landscaper at your side.



# ENTER FOR 2023... SIMPLER, QUICKER, EASIER.

Demonstrate your professional pedigree and enter your company's top garden project today.

The entry process is quick and easy, it is all online, no paper portfolios to produce, which offers you the flexibility to enter in your own time around your busy workload. Be sure to get consent from your clients as a garden visit by the judges is part of the process.

Celebrate excellence with us; enter now...

Visit [www.aplawards.co.uk](http://www.aplawards.co.uk) for further information. **All entries must be submitted by Friday 3 June 2022.**

**Could the Supreme Winner 2023, be you?**

Cost of entry is  
**£70.00 + VAT**  
per entry before  
26 March 2022.

(after the 26 March the  
price will increase to  
£85.00+ VAT per entry)

Kingston Landscape Group

Supreme Winner 2020

Simply Green Landscapes Ltd

Supreme Winner 2021

Landform Consultants Ltd



**Abbey Garden Landscaping**

✉ david@abbeygardendesign.co.uk  
☎ 07793 292673  
💻 www.abbeygardendesign.co.uk

**Acacia Gardens Ltd**

✉ herman@acacia-gardens.co.uk  
☎ 07817797374  
💻 www.acacia-gardens.co.uk

**Adam Vetere Landscape & Garden Design**

✉ adam@adamvetere.co.uk  
☎ 07720 449702  
💻 www.adamvetere.co.uk

**Alfresco Landscaping Ltd**

✉ beingcreative@alfrescolandscaping.co.uk  
☎ 01733 254100  
💻 www.alfrescolandscaping.co.uk

**Andy Lewis Landscapes**

✉ andylewislandscapes@gmail.com  
☎ 07985 668614  
💻 andylewislandscapes@gmail.com

**Bowood Landscapes Ltd**

✉ kevin@bowoodlandscapes.co.uk  
☎ 07921 499208  
💻 www.bowoodlandscapes.co.uk

**Bushy Business Ltd**

✉ david@bushybusiness.com  
☎ 01483 276630  
💻 www.bushybusiness.com

**Cowen Landscapes**

✉ matt@cowenlandscapes.co.uk  
☎ 07598 160812  
💻 www.cowenlandscapes.co.uk

**Creative Landscape Co Ltd**

✉ info@creative-landscape.co.uk  
☎ 01189 341500  
💻 www.creative-landscape.co.uk

**DBM landscapes**

✉ sales@dbmlandscapes.co.uk  
☎ 07775 627353  
💻 www.dbmlandscapes.co.uk

**Emotive Landscapes**

✉ jenne@emotivelandscapes.co.uk  
☎ 07754 661455  
💻 www.emotivelandscapes.co.uk

**Esse Landscapes**

✉ steve@esseland.co.uk  
☎ 01342 714095  
💻 www.esseland.co.uk

**Frognal Gardens Ltd**

✉ noel@frognalgardens.com  
☎ 02074 333367  
💻 www.frognalgardens.com

**Goldenstones Gardening**

✉ chris@goldenstones.co.uk  
☎ 01453 835032  
💻 www.goldenstones.co.uk





## Our Entrants



### Green Bear Landscaping Ltd

✉ reenbearlandscaping@gmail.com  
☎ 07450 203305  
💻 www.greenbearlandscaping.co.uk

### Greenscape Landscaping / Arboriculture

✉ info@greenscapeeastdevon.co.uk  
☎ 01395 442044  
💻 www.greenscapeeastdevon.co.uk

### G-Scapes of Lichfield Ltd

✉ suzanne@g-scapes.co.uk  
☎ 01543 256401  
💻 www.g-scapes.co.uk

### Habitat Landscapes Ltd

✉ craig@habitatlandscapes.co.ukk  
☎ 07595 621252  
💻 www.habitatlandscapes.co.uk

### HollandGreen Landscapes

✉ hello@hollandgreen.co.uk  
☎ 07968 723139  
💻 www.hollandgreen.co.uk

### Karl Harrison Landscapes Ltd

✉ karl@karlharrison.design  
☎ 07581 193 034  
💻 www.karlharrison.design

### Kingston Landscape Group

✉ yolanda@klguk.com  
☎ 07470 167109  
💻 www.klguk.com

### Landscapia Ltd

✉ sales@landscapia.co.uk  
☎ 01215 502364  
💻 www.landscapia.co.uk

### Landtech Landscape

✉ daniel@landtech-landscape.co.uk  
☎ 07957 476320  
💻 www.landtech-landscape.co.uk

### Langdale Landscapes Ltd

✉ nik@langdalelandscapes.co.uk  
☎ 01732 700199  
💻 langdalelandscapes.co.uk

### LG Landscapes Limited

✉ lglandscapeswilts@gmail.com  
☎ 07730 570162  
💻 www.lglandscapes-trowbridge.co.uk

### Longstock Park Landscapes - Waitrose

✉ shaun.beale@waitrose.co.uk  
☎ 01264 810894  
💻 www.leckfordestate.co.uk/

### Lupin Gardening Ltd

✉ mail@lupingardens.co.uk  
☎ 07788 697136  
💻 www.lupingardens.co.uk

### M. Withall Landscapes

✉ info@mwithall.co.uk  
☎ 07912 028229  
💻 www.mwithall.co.uk





#### **Mango Paving & Landscaping Ltd**

✉ roxy@mangolandscapes.co.uk  
☎ 01392 690212  
💻 www.mangolandscapes.co.uk

#### **Nordland Landscapes**

✉ daniel@nordlandlandscapes.co.uk  
☎ 07951 587040  
💻 www.nordlandlandscapes.co.uk

#### **Planet 14 Landscapes Ltd**

✉ info@planet14landscapes.co.uk  
☎ 07899 901291  
💻 www.planet14landscapes.co.uk

#### **Radial Landscapes Ltd**

✉ radiallandscapes@gmail.com  
☎ 07539 224300  
💻 www.radial-landscapes.co.uk

#### **Roger Gladwell Landscapes**

✉ sales@rogergladwell.co.uk  
☎ 01728 638372  
💻 www.rogergladwell.co.uk

#### **Shrub and Stone**

✉ info@shrubandstone.co.uk  
☎ 07970 251412  
💻 www.shrubandstone.co.uk

#### **Simply Green Landscapes Ltd**

✉ rob@simplygreenlandscapes.co.uk  
☎ 01189 790715  
💻 www.simplygreenlandscapes.co.uk

#### **The Bath garden Company**

✉ info@thebathgardencompany.co.uk  
☎ 01225 318849  
💻 www.thebathgardencompany.co.uk

#### **The Botanical Gardener**

✉ chris@thebotanicalgardener.co.uk  
☎ 02087 041193  
💻 www.thebotanicalgardener.co.uk

#### **The Secret Landscape Company**

✉ james@thesecretlandscapecompany.co.uk  
☎ 07951 760646  
💻 www.thesecretlandscapecompany.co.uk

#### **Transform Landscapes Design and Construction**

✉ enquiries@transformlandscapes.co.uk  
☎ 01428 652222  
💻 www.transformlandscapes.co.uk

#### **Your Garden Needs**

✉ andy@yourgardenneeds.co.uk  
☎ 07876 353409  
💻 www.yourgardenneeds.co.uk





[WWW.APLAWARDS.CO.UK](http://WWW.APLAWARDS.CO.UK)