



Borders & Trade Update

Get Ready for 30 April 2024: Part 2

www.hta.org.uk/policy
policy@hta.org.uk

Introduction

- Common User Charge (Defra) & questions
- Latest Update (HTA) including
 - Port user fees
 - BCP operations
 - Pragmatic approach
 - IPAFFS
- Questions (with Defra)
- Look out for polls!!
- Next steps

Guest Speakers

- Priya Sinever, Defra (Common User Charge)
- Mark Kelynack, Defra (Biosecurity, Borders & Trade)
- Jason Pollock (Biosecurity, Borders & Trade)

Borders & Trade: update

April 30th 2024 (not 1 May!)

Border Control Points will be used for EU goods

- Import inspections move to Border Control Posts (or Control Points)
- All products eligible for inspection will be inspected at the border
- Place of Destination scheme ceases
- Includes those goods in the medium risk BTOM category

How informed do you and your suppliers feel about the changes coming in on the 30th April 2024?

POLL 1



Harwich BCP User Fees

- Will be charged to the entity booking the ferry (so likely the haulier / agent on Destin8, who must have a Harwich port account)
- Applies per unload £ ranges between £57.42 and £737
- Depends on inspection type, trailer type, amount unloaded and packing used
- Will be reviewed after Sevington CUC released and after a period of operation as based on existing inspections for HMRC & Border Force

Harwich BCP User Fees

- Trolleys are included in 'palletised'
- Full turnout is more than 50% of trailer
- 'all other goods' is anything requiring specialist equipment to unload, or handball
- E.g. Reverse in to the curtainsider bay, drawing curtains but not unloading = £57.42 (with driver)
- E.g. Unaccompanied, ambient partially turnout loose load = £307.70
- E.g. Accompanied, temp controlled, Full turnout on trolleys = ££477.25

Harwich - operation

- Carrier (e.g. Stena line) uses Destin8 which draws hold info from IPAFFS
- Port op (Hutchison) receives info on the ships manifest which IDs trailer / vehicle reg
- Trailers selected are inputted into ports own system 'Autoexams' & marshalled to BCP
- Charge is applied to whoever made the ferry booking
- Agents can 'claim' goods if they have a Destin8 Badge code, otherwise haulier will receive charge from Hutchison (if have a port account – might need to set up)
- If released before inspection, no charge

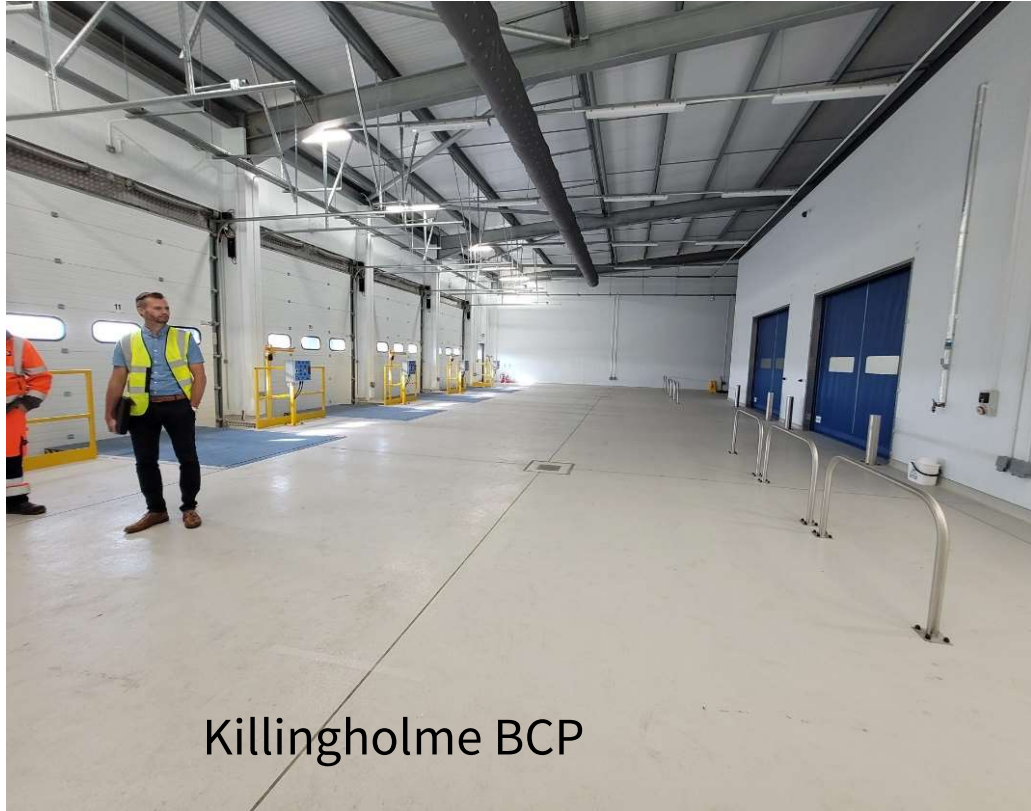
BCP Operations

- Prenotification process exactly as it is now *except*
 - Instead of selecting a POD on pre-notification, select the BCP at the port of entry
 - Must use IPAFFS
- IPAFFS & customs declaration **MUST MATCH**
 - Commodity codes; (weight);
 - Must contain a trailer number / vehicle reg
- Testing – both private & government
 - Harwich takes 80% of plant trade from EU
 - Private testing has taken place & is ongoing
 - Cabinet Office testing took place in March

Are you or your suppliers bringing stock in early (i.e. pre 30th April) or are you delaying & if so, how long? "

POLL 2





Killingholme BCP



Southampton BCP



Harwich BCP



Tilbury 2 BCP

EXAMINATION FACILITY

Harwich Test – March 2024



- x 13 Inspection Bays.
- x 11 with Dock Levellers.
- x 2 reverse-in bays.
- Freezer and Cold storage capability.
- Supported by all Government Agencies.

Practical Considerations

1. Spread import days, avoid peaks
2. Provide loading plans
3. Ensure highest risk plants easily accessible
4. Label everything
5. Indicate temperature controls, if reqd
6. Pre-notify as early as possible
7. Check & double-check documentation
8. Check IPAFFS regularly

Which of these practical actions might you / your supplier / haulier be taking? (Tick all that will apply)

POLL



Issues & Risks

Issue	Likelihood	Mitigation
CUC & other BCP User Fees – cost & ‘lottery’ prohibit trade	Medium	Become CP, use a CP,
IPAFFS unreliable, burden & delays	Medium	IPAFFS contingency,
Biosecurity breach at / due to BCP	Low/Medium	Retrofit BCPs, insurance/compensation/ indemnity scheme
Groupage unviable	Medium/High	Solutions??
CP & AOS inaccessible	High	Sustain PoD, expedite reduction in CP thresholds, increase easements
BCP handling damage / repacking not possible	Medium/High	Training, ‘help desk’, compensation process, clarity on liability, packing advice
BCPs unable to handle plants/trees permanently (i.e. not retrofit)	High	Sustain PoD, expedite reduction in CP thresholds, increase easements
Hauliers / exports don’t trade with UK	Medium	Logistics sector engagement; Defra ‘agile task force’
Lack of user awareness	Medium	Clear & consistent comms
Trade skewed pre or post week 1	High	Pragmatic approach plan, HTA surveying to assess, Defra/Gov ‘agile task force’
Destruction processes & costs unclear	High	All BCPs to write & issue SOP s & establish cost protocol

Government Communications

- Weekly IPAFFS training webinars
- DEFRA Webinar on 11 April
- Plant Health Portal information
- Gov.uk leaflet collection
<https://www.gov.uk/government/publications/border-target-operating-model-information-leaflets-for-businesses>
- Sign up to Government Newsletters
 - IPAFFS, Defra-SPSIT-Plant_comms_enquiries@bbtp.defra.gov.uk
 - Defra Plant Health, planthealtheuexitqueries@defra.gov.uk
 - Defra Biosecurity Borders & Trade Newsletter, BBTP-businessreadinessforum@defra.gov.uk
 - Cabinet Office Border Enquiries, border.enquiries@cabinetoffice.gov.uk

What can you do?

- Plan for worst case scenario
- Speak with your EU based suppliers, tell them what you know
- Ask your agent / freight forwarder how they will deal with costs & new processes
- Logon to IPAFFS regularly, even if you don't do your own prenotifications
- Attend Defra webinars & read advice leaflets
- Offer trade statistics, data and costs to HTA
- Talk directly to us and be case studies!

HTA Practical Actions

- BCP visits –to observe testing
- Close ties with port operators & hauliers
- Frequent meetings with Defra & Cabinet Office etc
- Coverage in national media
- Regular press releases (see hta.org.uk/news)



HTA Events & Workshops



- Previous in person workshops e.g. November 2023 - info available on website
- Regular HTA Policy monthly online meetings & webinars
 - Next one 29th April – will incl peat & borders
 - 20th May CITES webinar (open to all)
 - Visit website to sign up
- Weekly Member Update
- Email policy@hta.org.uk



Thank you & discussion

- Views, comments and input
- Sharing intelligence / insights
- Questions?

Further info: hta.org.uk/policy
policy@hta.org.uk

Following this webinar, how informed do you feel now about the changes coming in on the 30th April 2024?

POLL

