

EAMU (2024/1924 & 1925) for Use in Ornamental Plant Production

A preventative fungicide for the control of various diseases on ornamental crops

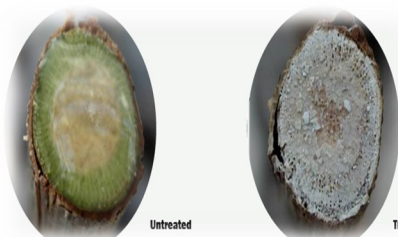
- A biorational product containing *Trichoderma atroviride* strain SC1, safe to the environment
- Multiple modes of action including antagonism, antibiosis, mycoparasitism, and pathogenicity reduction
- A particularly good option during the spring and summer pruning seasons on various crops
- Handling of concentrated product should be done with dust mask, may cause allergic reaction
- Available in 100g sachets, improved product storage longevity achieved at lower temperatures

Practical Considerations

- Rain fast in 48 hours
- Should be applied in temperatures between 10 °C-30 °C and a relative humidity over 70%
- Considered safe on predatory mites, but some parasitic wasps could be affected
- Apply before the onset of pathogen infection
- Water temperature should be 7-15 °C and agitation is required in the spray tank
- Use of a hollow cone nozzle and swirl plate is recommended, producing a fine spray
- Do not tank mix with any other plant protection products

Targets Controlled

- Blossom and leaf blights
- *Botryosphaeria* species
- *Botrytis* (grey mould)
- Box blight
- Fungal shot hole
- *Fusarium* species
- *Nectria* canker
- Peach leaf curl
- Powdery mildew
- *Rhizoctonia* species
- Stem blights



Best Use Guidelines

- Use as a wound sealant on plant tissue as well as a protective layer on the leaf surface. Good option during leaf fall for crops susceptible to canker
- Example crops could include Cornus, Cotinus, flowering cherries, Lavandula after pruning in the autumn, outdoor maiden trees post topping/snagging, and generally during leaf fall
- Stable over a range of spray solution pHs
- Can be light sensitive, apply during overcast weather conditions, early mornings or late evening when light levels are low
- Avoid using this product during budding and grafting, prior to callus formation



Formulation	Water dispersible granule, 150g/kg containing 1 x 10 ¹³ colony forming units of <i>Trichoderma atroviride</i> strain SC1		
Chemical class and resistance group	Biological fungicide FRAC BM02		
Crops and situations	Ornamental plant production		
Number of applications	Two applications, with a minimum spray interval of seven days		
Dose rate and concentration	200g/ha or 50g/100L (400L/ha)	Restrictions	One day before harvest
Water volume	100L - 400L/ha	MAPP Number	20311

Useful links to related research and references, and disclaimer: This document has been collated using information from the [Health and Safety Executive \(HSE\) website](#), supplier technical information, and research reports (where available). Growers must hold a paper or electronic copy of an EAMU before using any product under the EAMU arrangements. Any use of a plant protection product via an EAMU is at grower's own risk. Always follow EAMU recommendations, including rate of use, maximum number of applications per crop or year, and where crop safety information is not available, test the product on a small number of plants first to determine phytotoxicity prior to widespread commercial use. For any additional detail, contact the HTA advice line at nurseryproduction@hta.org.uk